

BPS History

2000's

First Chief Executive appointed
New website
New Boards
Centenary celebrated
Partnership with Wiley-Blackwells
Full time editor for the Psychologist
Board of Trustees established
Representative Council
Full time Parliamentary Officer
London Office purchased
Science Council membership
Policy Support Unit formed
BPS Learning Centre
HPC becomes statutory regulator

(M = 49,000)

BPS Current Position

Priority One

To be the Learned Society and Professional Body

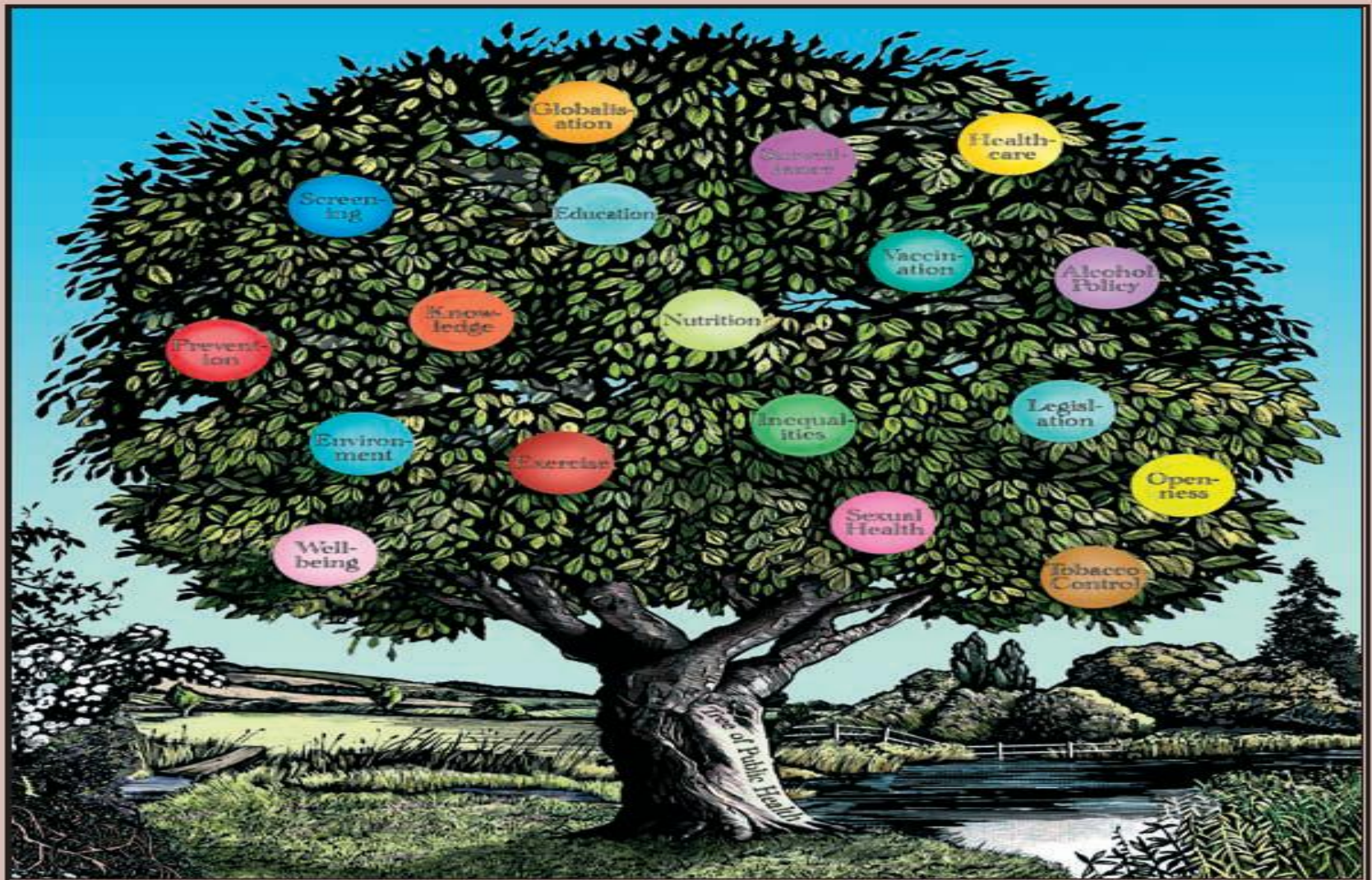
- effective and efficient organisation
- enhance the discipline
- inclusive membership
- excellent publication and events
- working with other disciplines
- services for members

BPS Current Position

Priority Two

To make psychology accessible to all

- improving dissemination
- inspiring people
- helping people fulfil their potential
- listening to those who use our service



BPS Current Position

Activities

- ❑ undergrad accreditation in 116 universities
- ❑ 143 postgrad progs in 86 universities
- ❑ provides ethical guidance
- ❑ Member Conduct Rules
- ❑ Chartered membership for 17,000 members
- ❑ grants to support research
- ❑ confers honours and awards
- ❑ 11 scientific journals
- ❑ publishes books with Wiley Blackwell
- ❑ The Psychologist
- ❑ free Research Digest

BPS Current Position

Activities

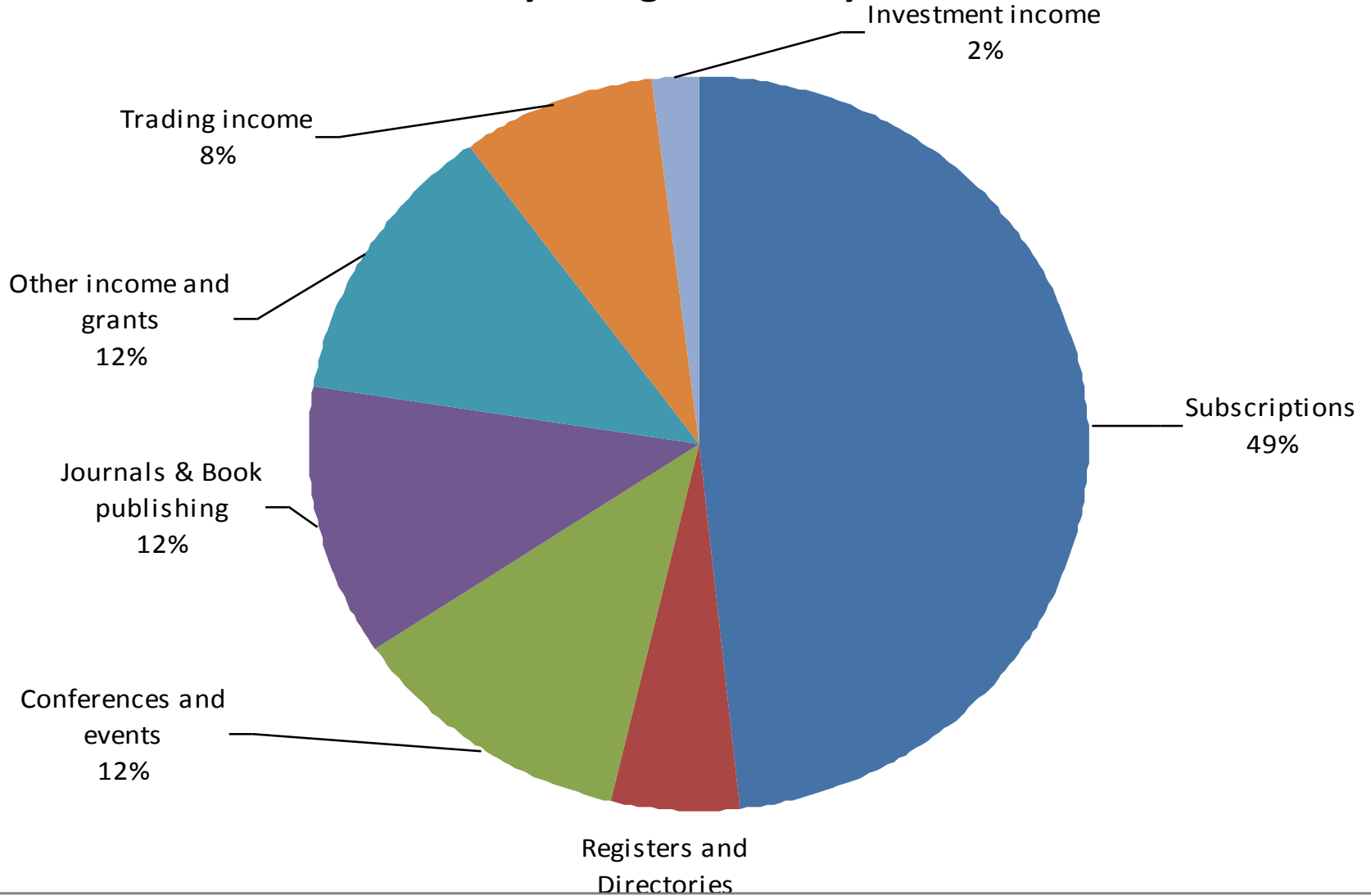
- ❑ website
- ❑ newsletters
- ❑ BPS Online Shop
- ❑ links with psychological societies globally
- ❑ Media Centre
- ❑ Policy Support Unit
- ❑ policy statements
- ❑ responses to government consultations
- ❑ myCPD
- ❑ Learning Centre
- ❑ conferences and other events

BPS Current Position

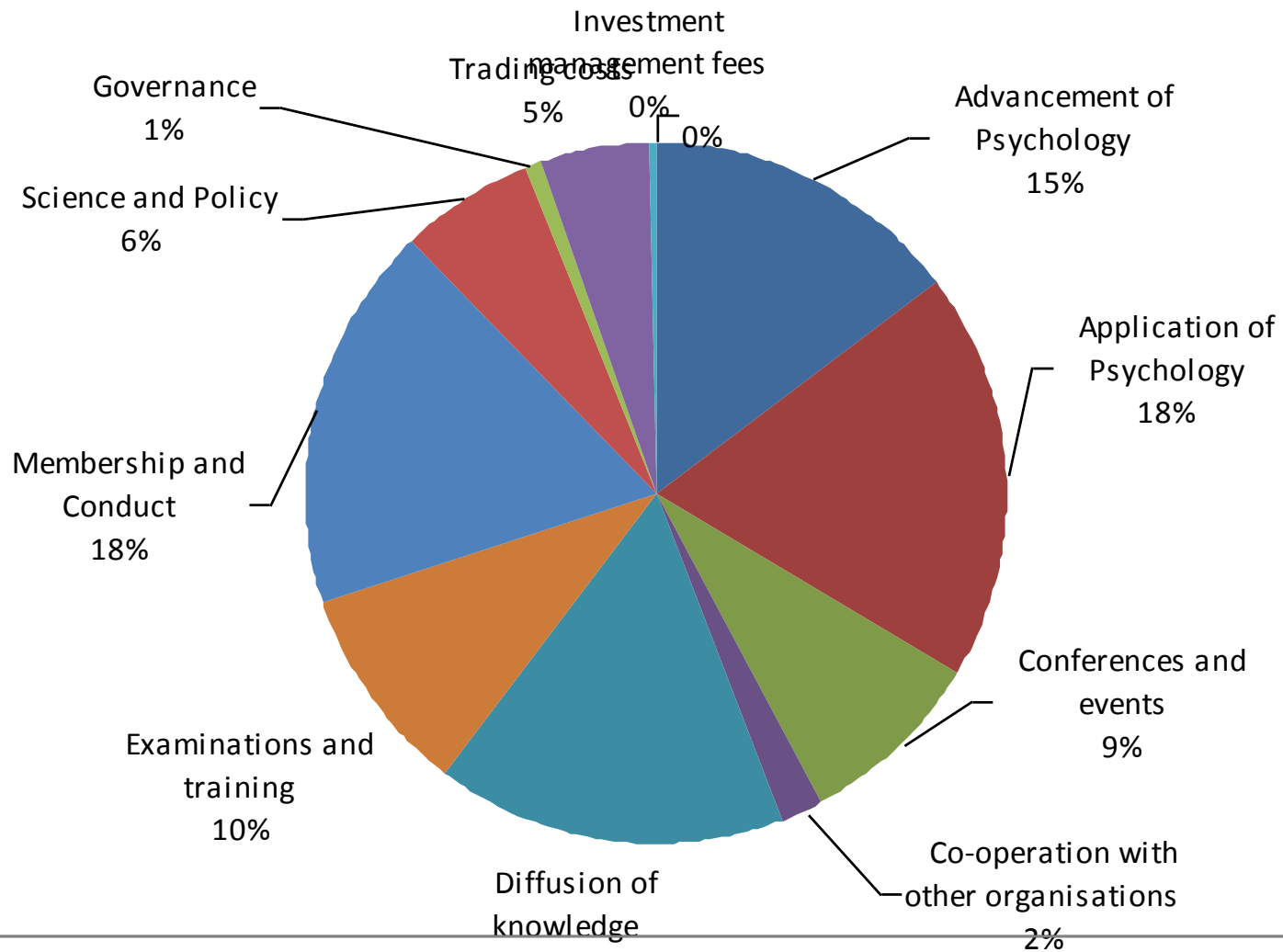
Finance

- now returned to surplus
- £10.5 million income
- £10.1 million expenditure
- £8.6 million assets
- costs controlled

The British Psychological Society - income 2009



The British Psychological Society - expenditure 2009



BPS Current Position

Subscriptions

Resolution voted for in 2007

- ❑ level set for three years
- ❑ increase based on APR
- ❑ level static for 2008 and 2009
- ❑ review in 2011

THE SOCIETY - MEMBERS

REPRESENTATIVE
COUNCIL

BOARD OF
TRUSTEES

RESEARCH
BOARD

PSYCHOLOGY
EDUCATION
BOARD

PROFESSIONAL
PRACTICE BOARD

MEMBERSHIP AND
PROFESSIONAL
TRAINING BOARD

PUBLICATIONS AND
COMMUNICATIONS
BOARD

THE SOCIETY - MANAGEMENT

CHIEF EXECUTIVE - Prof Ann Colley

CORPORATE SERVICES - Mike Laffan
and
COMMUNICATIONS

MEMBERSHIP SUPPORT - Simon Bowen
& SERVICES

FINANCE - Russell Hobbs

BPS Current

Services for members

- ❑ Annual member survey
- ❑ BPS Learning Centre
- ❑ On line shop
- ❑ Product Teams
- ❑ Members Benefits programme
- ❑ Member Networks
- ❑ Recruitment in The Psychologist
- ❑ Discounts
- ❑ MyCPD

The Society as a Learned Society

- ❑ award schemes to recognise excellence
- ❑ grant schemes to encourage post graduate study visits
- ❑ leading all consultation responses of specific relevance to psychological science
- ❑ oversee the positioning of the Society in response to key developments in science
- ❑ development of guidance documents and policy statements

The Society as a Learned Society

- representing the Society with regard to psychological science
- supporting post graduate research students
- joint working across the Society
- supporting post doctoral researchers
- liaison with other organisations
- liaison with relevant funding agencies
- recognising emerging and advancing areas of the discipline

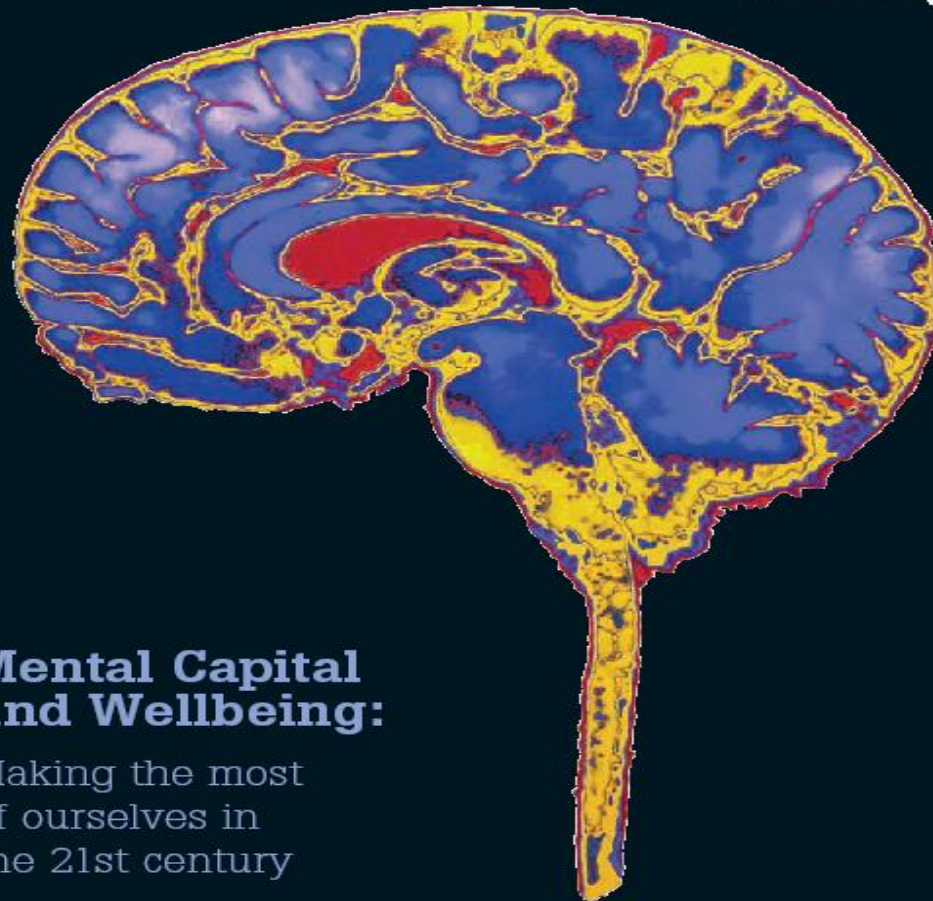
The Society as a Learned Society

- ❑ Alternatives to Custodial Sentencing
- ❑ Climate Change
- ❑ Behavioural Economics
- ❑ Debt and Mental Health
- ❑ Knife crime
- ❑ Children in dramatic performances
- ❑ Transparency in Family Courts
- ❑ Expert Witnesses
- ❑ Social Brain
- ❑ Effect on families of immigration detention
- ❑ Positive Education
- ❑ End of Life Care



Government
Office for
Science

Foresight



Mental Capital and Wellbeing:

Making the most
of ourselves in
the 21st century

FINAL PROJECT REPORT

Foresight Project

Mental Capital and Well being: making the most of ourselves in the 21st century

Major challenges ahead:

- ❑ Demographic age-shift
- ❑ Changes in global economy and work
- ❑ Changing nature of society
- ❑ Changing attitudes, values, expectations
- ❑ Changing nature of public services
- ❑ New science and technology

Foresight Project

Mental Capital and Well being: making the most of ourselves in the 21st century

Lifespan issues:

- ❑ Children
- ❑ Looked-after children
- ❑ Adolescence
- ❑ Drugs for cognitive enhancement
- ❑ Mental ill-health
- ❑ Promoting positive mental health
- ❑ Adults: learning
- ❑ Adults: working life
- ❑ Older adults

Foresight Project

Mental Capital and Well being: making the most of ourselves in the 21st century

Key choices for policy makers :

- ❑ Government
- ❑ Personal and corporate
- ❑ Diversity of stakeholders
- ❑ Longer term benefits

Next steps for government :

- ❑ Better use of evidence
- ❑ Better decision making
- ❑ Improved co-ordination

CHANGES

- ❑ Discontinued the voluntary register
- ❑ Establish an online searchable membership list
- ❑ Publish a Directory of Chartered Members from 2010
- ❑ Change and simplify membership processes
- ❑ Change GBR to GBC
- ❑ Revised the Code of Ethics & Conduct
- ❑ Member Conduct Rules
- ❑ plan for further specialist registers
- ❑ Convert the DoN into a post-qualification register

CHANGES

- ❑ Discontinue functions to be taken on by HPC
- ❑ Review services for members
- ❑ Consult on a new strategic plan
- ❑ Improve information technology and website
- ❑ Establish “The Learning Centre”
- ❑ New education governance structure
- ❑ Use the results of the member survey to review changes
- ❑ Review the Boards

THE FUTURE OF THE SOCIETY

MORIBUND

STATIONARY

FLOURISHING

THE FUTURE OF THE SOCIETY

MORIBUND

- ❑ reduced activity
- ❑ few members
- ❑ little money
- ❑ Competitors
- ❑ no volunteers
- ❑ no audience

THE FUTURE OF THE SOCIETY

STATIONARY

- ❑ membership static
- ❑ activity static
- ❑ financially challenged
- ❑ some competition
- ❑ difficult to get volunteers
- ❑ routinely consulted but ignored

THE FUTURE OF THE SOCIETY

FLOURISHING

- ❑ membership increasing
- ❑ activity increased
- ❑ more sources of income
- ❑ little competition, more partnerships
- ❑ high standard of volunteers
- ❑ consulted and effective

WHY HAVE THE SOCIETY ?

We need a flourishing Society to:

- enhance Psychology
- pool ideas and energy
- encourage cross fertilization
- give us all a more powerful voice
- represent the discipline
- help us face challenges together
- improve us as a learned Society

There is a tide in the affairs of men.
Which, taken at the flood, leads onto fortune;
Omitted, all the voyage of their life
Is bound in shallows and in miseries.
On such a full sea are we now afloat,
And we must take the current when it serves,
Or lose our ventures.



The
British
Psychological
Society

Thank you