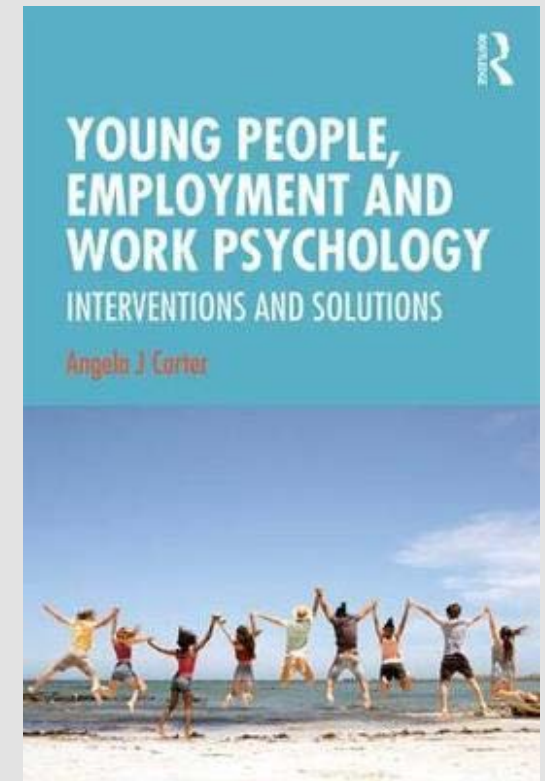


# Working on the frontline with vulnerable young people

31 October 2019

Yeşim Guner

Chartered Occupational Psychologist





# YOUNG PEOPLE, EMPLOYMENT AND WORK PSYCHOLOGY

INTERVENTIONS AND SOLUTIONS

Angela J Carter



**There is no such thing as a  
self-made man. You will reach your  
goals only with the help of others.**

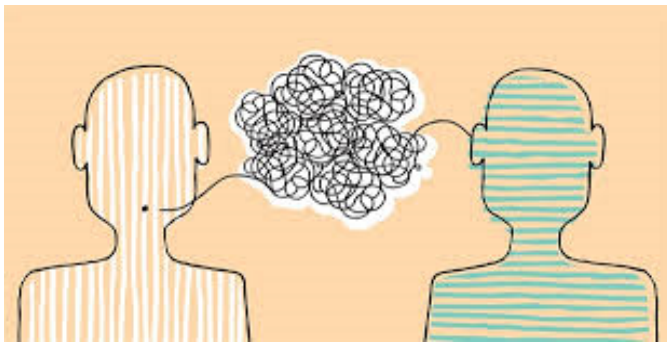
George Shinn



# A Bit About Me...



What is the Importance of  
**Multidisciplinary Working** in  
effectively supporting society's  
**most vulnerable** young people?

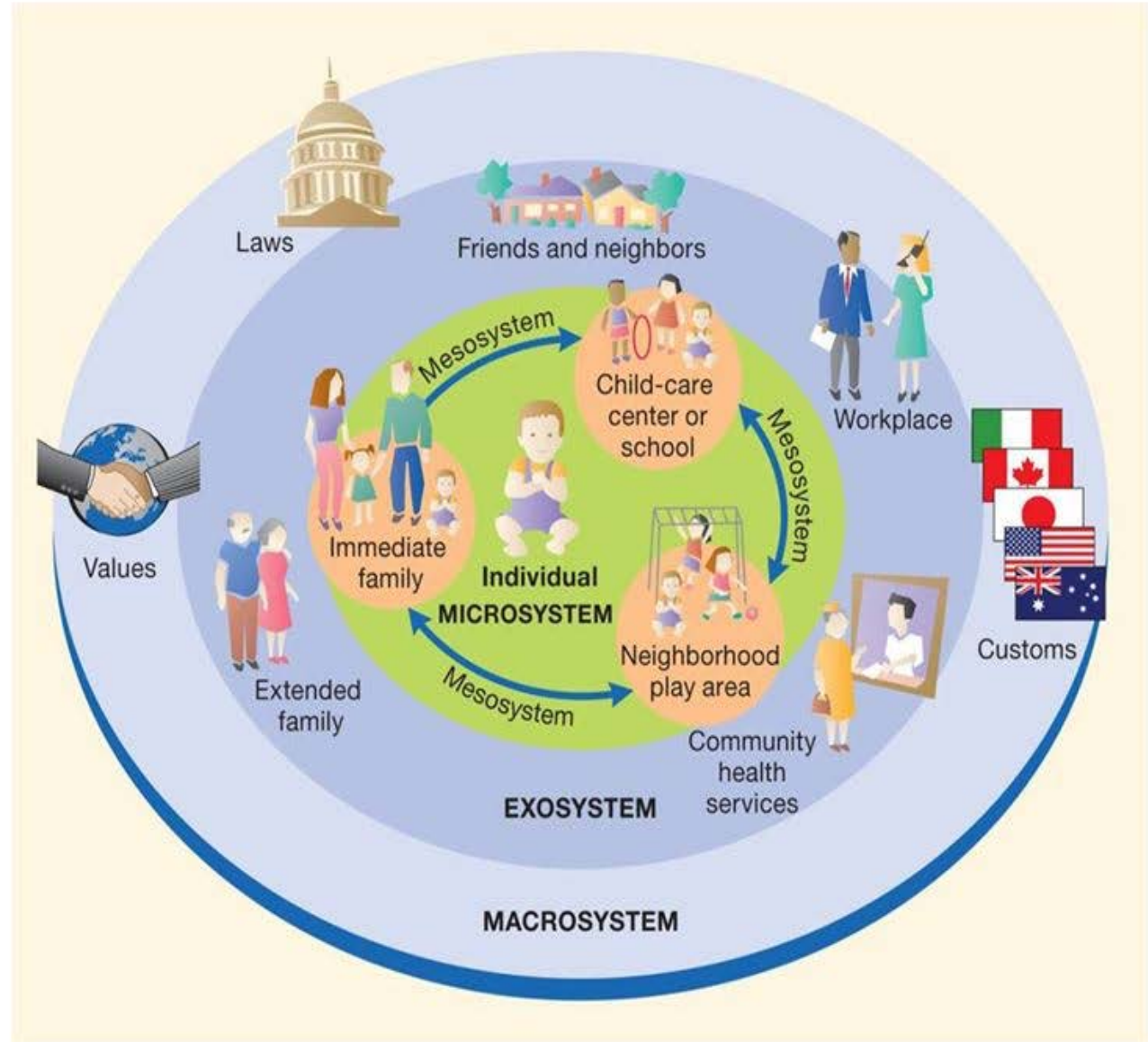


What is the importance of being able to **communicate effectively** with young people (YP)?



Let's talk about Early Help Assessment (*previously known as Common Assessment Frameworks*)...

# Bronfenbrenner's Ecological Theory (1979)



- This theory followed the principles that a person's development is determined by everything in their surroundings at **5 different levels**
- '**microsystem**' (e.g., direct contact from home or school) to their '**macrosystem**' which includes cultural environment in which the CYP lives (e.g., economics, status, values).

# The Lost generation?



- A number of young people we work with suffer from mild to moderate, or, in some cases severe Special Educational Needs and Disabilities (SEND).
- When these disabilities are coupled with mental health issues, they can significantly impact employment opportunities as these young adults are then left to their own devices after completing 'statutory school leaving age'.



The Head of Employer Engagement at Mencap (Mark Capper, 2015) stated:

*“People with a learning disability have the lowest employment rate amongst disabled people. Just 7% of people with a learning disability have a paid job, yet around 80% can work”.*



Department  
for Education



A little about my own personal experiences over a 4.5 year period inside a London **Pupil Referral Unit (PRU)** for young people with severe mental health issues...

# Case Study

## "JAY"

- A 15-year old male who was ready to embark on the next step out of this specialist PRU
- Jay was originally referred to this Hospital PRU due to becoming “lost in the system”
- During sessions we would work on building his **self-esteem, motivation, goal-setting** and **future planning**

### EVALUATION

8-weeks after initial session, Jay showed signs of growing in confidence; his numeracy and literacy skills had improved...



# What is the role of a Youth Practitioner?



- 1-2-1 sessions over a short-term period
- Identify a suitable place of education for the YP
- Create situations where the YP is engaging in positive activities
- Liaise with other professionals to ensure partnership working to safeguard YP



'Problem  
Focused'  
VS  
'Solution  
Focused'

## Problem-focused Facilitation Approach

centers on reducing the "problem"



‘Solution-  
Focused’  
Facilitation  
Approach



**Solution-focused Facilitation Approach**  
centers on enhancing the "solution"



Let's talk  
Ethics!

What Ethical Issues have you faced at work?



Psychologists have a duty to  
promote well-being in  
individuals



We show  
Respect, Accuracy & Honesty  
in what we do

THANK YOU!

QUESTIONS??

