



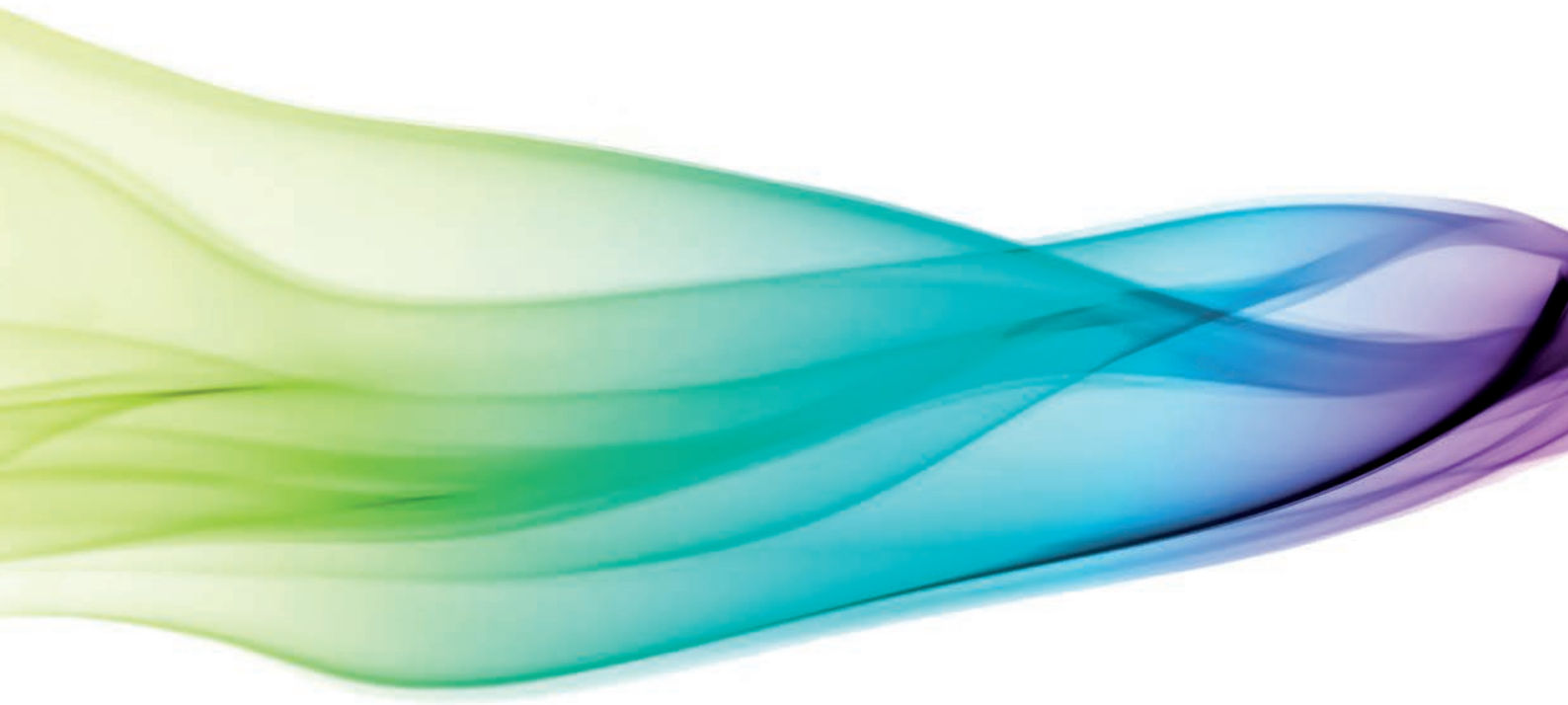
Code of conduct for Affiliate Subscribers

Scope

The Society's Statutes give the Society the right to terminate at any time the rights, privileges and benefits of subscribership. This Code of Conduct provides guidance on the behaviour expected of Affiliate Subscribers of the Society, but is not an exhaustive list. It does not repeat obligations placed on Affiliate Subscribers by the general law, for example, in the areas of discrimination and employment.

Code of Conduct

- 1** Affiliate Subscribers must not act in a way that damages, or is likely to damage, the reputation of the British Psychological Society or is contrary to the object of the Society as set out in the Royal Charter.
- 2** Any Affiliate Subscriber convicted of the following criminal offences will be expelled from the Society:
 - a** A sexual offence against a child or vulnerable adult, or a sexual offence committed by a careworker against a person who has a mental disorder, including any offence of possessing or taking indecent images of children.
 - b** Any other criminal offence for which a custodial sentence is imposed.
- 3** Any Affiliate Subscriber who becomes the subject of a conduct hearing by a third party, for example, an employer or a professional body, must inform the Society without delay and may, at the discretion of the Society, may be reprimanded, suspended or expelled from the Society.
- 4** Any Affiliate Subscriber who has been found by a court or tribunal, an employer's internal disciplinary investigation, or a university disciplinary investigation to have plagiarised the work of another or to have falsified the results of, and/or data relating to, psychological or other research will be, at the discretion of the Society, reprimanded, suspended or expelled from the Society.
- 5** Any Affiliate Subscriber who is found by the Trustees to have claimed to be a Member of the Society, or has been found to have used misleading titles or descriptions, may be reprimanded, suspended or expelled from the Society.
- 6** Any Affiliate Subscriber who is found by the Society to have provided false or misleading information in an application to become an Affiliate Subscriber of the Society or an application to join a Society Register may be reprimanded, suspended or expelled from the Society.
- 7** Any Affiliate Subscriber whose subscription remains unpaid at the end of the payment period will be removed from Affiliate Subscribership of the Society.



The British Psychological Society

St Andrews House, 48 Princess Road East, Leicester LE1 7DR, UK

t: 0116 254 9568 **f:** 0116 227 1314 **e:** mail@bps.org.uk **w:** www.bps.org.uk