

The British
Psychological Society
promoting excellence in psychology

Annual Report 2010



www.bps.org.uk



The
British
Psychological
Society

The Society

The British Psychological Society was founded in 1901 and incorporated by Royal Charter in 1965. Our sole Royal Charter objective is to promote the advancement and diffusion of the discipline and the usefulness of members.

We:

- are the Learned and Professional body for the discipline;
- aim to make the science and practice of psychology accessible to everyone;
- aim to include in our membership all those who are engaged or interested in psychology;
- award Chartered Status to properly qualified members – there are over 17,000 Chartered Psychologists;
- give grants to support research, scholarship and public engagement activities;
- run a media centre to publicise the work of our members through the media to the wider public;
- represent the discipline by publishing policy statements and preparing responses to government consultations;
- provide evidence-based briefings and reports to the UK and devolved parliaments;
- hold numerous conferences, workshops, continuing professional development and training events;
- publish 11 major peer-reviewed scientific journals, and jointly publish *Evidence-Based Mental Health* with the British Medical Association and the Royal College of Psychiatrists;
- publish *The Psychologist* magazine each month;
- publish textbooks under the BPS Blackwell imprint;
- provide a free Research Digest: www.researchdigest.org.uk;
- provide ethical guidance and advice via our Ethics Committee;
- recognise distinguished contributions to psychological science and practice through individual awards, honours and Fellowships;
- accredit through an active partnership scheme both undergraduate and professional postgraduate university programmes;
- provide examinations that allow successful candidates to register with the Health Professions Council;
- help employers find the right psychologist through the Psychologist Appointments (www.psychapp.co.uk) section of The Psychologist;
- publish newsletters and occasional papers for our many specialist member networks;
- have working links with psychological societies and associations throughout the world;
- maintain a comprehensive website (www.bps.org.uk).

Contents

Message from the President	2
The Society offices	4
Financial report and summary accounts for the year	6
Board of Trustees and Honorary Officers of the Society	13
Membership figures	17
Society structure	20
Office management structure	21

Honorary Fellows & Honorary Life Members

Honorary Fellows

Professor A.D. Baddeley CBE CPsychol AFBPsS
Professor G.M. Breakwell CPsychol
Professor R. Bull CPsychol FBPSS
Professor V.G. Bruce OBE CPsychol FBPSS
Professor J.S. Bruner
Professor D.V. Canter CPsychol
Professor A.J. Chapman CPsychol FBPSS
Professor N. Chomsky
Professor D.M. Clark CPsychol FBPSS
Emeritus Professor A.D.B. Clarke CBE CPsychol FBPSS
Emeritus Professor A.M. Clarke CPsychol FBPSS
Professor C. Cooper CPsychol FBPSS
Professor M. Donaldson FBPSS
Professor U. Frith CPsychol
Professor M.R.C. Hewstone CPsychol FBPSS
Professor R.A. Hinde
Professor E. Loftus FBPSS
Professor G.A. Miller
Professor J. Morton OBE CPsychol FBPSS
Dr H.A. Murray

Emeritus Professor P.M.A. Rabbitt
Professor Sir M. Rutter CBE CPsychol FBPSS
Professor H. Steinberg CPsychol FBPSS
Emeritus Professor P.B. Warr CPsychol FBPSS
Professor K.W. Wedell CBE CPsychol FBPSS
Professor A.W. Young CPsychol
Professor W. Yule CPsychol FBPSS

Honorary Life Members

Dr H. Beloff CPsychol FBPSS
Emeritus Professor R.M. Farr CPsychol FBPSS
Miss J. Hulford
Dr L.D. Kramer
Emeritus Professor D. Legge CPsychol FBPSS
Professor G.A. Lindsay CPsychol FBPSS
Mrs M.McAllister CPsychol FBPSS
Dr C.V. Newman CPsychol FBPSS
Emeritus Professor J.K. Radford CPsychol FBPSS

Message from the President



*Dr Gerry
Mulhern*

This has been a year during which economic matters have had a powerful influence on teaching, research and professional practice in psychology. Science funding is set to shrink in real terms over the next four years, although the Society and fellow learned societies had some success in lobbying the government to avoid actual budget cuts. In common with all other disciplines, we await the impact of increased university fees on the volume of applications to study psychology. Never before has our standing as a STEM subject been so important to the well-being of the discipline.

Among many Society events this year have been our highly successful Annual Conference, held in Stratford-upon-Avon, and three events aimed at younger audiences. In March the Scottish Branch held an undergraduate conference in Edinburgh, which provided a valuable opportunity for final year students to present to

their peers in a friendly environment. Towards the end of the year our 'Psychology 4 Students' lectures, held in London and Nottingham, were both sell-out events.

One of the most pleasing developments was the success of our first General Assembly. This was a two-day event designed to revivify Representative Council, which had suffered recently from low attendance by member networks. The new format, incorporating a meeting of the Council along with presentations by member networks, informal meetings of interest groups, a dinner and an overnight stay, led to the most positive atmosphere I have experienced in many years of Society meetings.

A personal highlight of the year was representing the Society as President at the 2010 Assembly of the International Union for Psychological Sciences in Melbourne. I have long argued that the Society has underperformed in terms of our international relationships, though not our international standing, so I was particularly pleased to be invited while there to speak at an event on the development of psychology in the Asia-Pacific region.

A landmark development was our entry into a publishing partnership for our journals (we are the largest publisher of psychology journals in Europe) with Wiley-Blackwell. One immediate benefit, and by no means the last, is that Society members now enjoy free online access to all 11 of our journals and an additional 32 Wiley-Blackwell titles.

We have had our share of sadness since the last Annual Report went to press. In particular, our dear friends and colleagues Liz Campbell, Martin Crawshaw and Stephen White left us prematurely. We remember them with gratitude.

Special thanks are due to Sue Gardner from whom I took the reins in June for her skilled stewardship of the Society, her dedication to the members, good humour and continued support. Thanks too to Honorary Officers Pam Maras and Richard Mallows, President Elect Noel Sheehy and all of my Trustee colleagues for keeping me on the relatively straight and narrow. I should also like to thank our Chief

Executive, Ann Colley, our Senior Management Team and all Society staff for their support and hard work throughout the year. This year more than ever, I have come to appreciate the excellence of our staff.

Despite the challenges that 2010 has posed, I am confident that the Society, as we embark on our 110th year, is better placed than at any time in its history to make great progress as a learned society and professional body.

Gerry Mulhern

President



Our 2010 Annual Conference in Stratford-upon-Avon was a great success.

The Society Offices



*Professor
Pam Maras*

The past year has seen a series of organisational and technological changes at the Society's office in Leicester, all designed to improve our service to members and to make things run in a more efficient and cost-effective way.

The Member Network Services and Conferences teams moved to the Membership Support and Services department, bringing about a more coherent office structure. The Quality Assurance Team was rebranded as the Partnership and Accreditation Team to reflect the launch of Accreditation through Partnership, the Society's new model of engagement with universities and their students. The Policy Support Unit has also been renamed, to become the Consultation Response Team, and now coordinates the preparation of the Society's responses to all consultations.

A new post of Marketing Officer was created at the end of 2010 to coordinate the Society's activity in this field. The role will focus on developing a portfolio of marketing materials that strengthens our

brand in both internal and external communications.

In 2010 we successfully negotiated a publishing partnership with Wiley-Blackwell to produce the Society's Journals. All members are entitled to free online access to our 11 journals as well as to a wide selection of other titles. The Society also contracted out the advertising function of *The Psychologist* to Redactive Media to ensure continued revenue growth through the use of a specialist provider.

The use of upgraded equipment in the post and print departments, along with an evolving office culture of using electronic documentation and communications media, has once again brought about significant cost reductions. In addition, the Member Networks department has been able to add to these efficiency gains through greater use of *The Psychologist* mailing, teleconferencing, e-mail and online forums.

The management of direct mail and commercial sales has been transferred to the Help Desk. These processes have undergone a complete review and redesign, and this is already beginning to show benefits through an upward trend in external interest and income.

Our ICT Strategy and Road Map, adopted in 2008, remains on target and the continuing investment in the Society's software services and systems infrastructure has provided a sound platform for the integrated growth of our information and communication services. The development of the searchable lists service on the website is a good example of this.

The completion of the redesign and launch of our new website has been delayed from its intended date in the autumn of 2010. This project has proved to be significantly more complex than originally envisaged. The integration of existing web applications and services, a more approachable writing style, categorisation, personalisation and user communities are all critical to the success of the site. So, although unfortunate, these delays have been necessary to ensure that our new website meets the requirements of members both on release and in the future.

Further system integration between our post and print equipment and our intranet services means they are being used more and more efficiently for electronic data storage. The establishment of a fully digitised document environment and a paperless office over the next 18 months is a realistic possibility.

In general, the operational changes throughout the office over the past year or so, involving the use of better systems and processes, have allowed us to provide an improved and increasing level of service to Society members.

Income from our Tabernacle Street building in London has exceeded all previous years, with higher than expected occupancy rates for both internal and external room hire. In May we welcomed our third tenant when the Political Studies Association moved into the third floor.

The Joint Negotiating Committee (JNC) has continued with the harmonisation of employees' terms and conditions. In November 2010 the JNC reached agreement on harmonised holiday entitlements; the new scheme will be effective in 2011. The final stage of the harmonisation process involves the updating and reissuing of staff contracts of employment and this will begin in 2011.

The JNC also agreed a cost of living increase of 1.5 per cent effective from 1 August 2010 until 31 December 2011. Changes in employment legislation will be its focus for the next year. I should like to take this opportunity to thank JNC members for all their dedication and commitment during the past year and look forward to working with them in the forthcoming year.

Finally, on behalf of the Trustees, I would like to thank our Chief Executive, Senior Management Team and all the other Society employees for their continued dedication and hard work.

Pam Maras

Honorary General Secretary

Financial report & summary accounts for the year



*Dr Richard
Mallows*

The Trustees are pleased to present their Report and Accounts of the Society and the trading subsidiary for the year ended 31 December 2010. The Society operates both in the UK and worldwide and is registered with the UK Charity Commission under registration number 229642. The Society is also registered in Scotland under registration number SC039452. The Trustees are responsible for ensuring that the financial statements prepared give a true and fair view of the group's activities and are presented in accordance with the Statement of Recommended Practice (SORP) 2005.

Structure, governance and management

The Society is governed by Royal Charter originally granted in February 1965 and subsequently revised, the last update being completed in November 2010. The object is 'to promote the advancement and diffusion of a knowledge of psychology pure and applied and especially to promote the efficiency and usefulness of members of the Society by setting up a high standard of professional education and knowledge'.

Society information including the details of the Chief Executive and the Trustees can be found on the back page of the full statutory accounts. The Trustees are responsible for the governance of the Society while the day to day management is devolved to the Chief Executive and the Senior Management Team. The senior managers are: Simon Bowen (Director of Membership Support and Services), Russell Hobbs (Director of Finance) and Mike Laffan (Director of Corporate Services and acting Director of Communications). The Chief Executive is Professor Ann Colley.

General and financial activities

The Consolidated Statement of Financial Activities for the year is set out on page 8 of the full financial statements.

Review of 2009 Income generation

The recovery within the finances of the Society continues apace. You will recall that in 2008 the Society made a significant loss, which had been part of an ongoing problem for the previous three years. In 2009, thanks to the hard work of Society staff, the organisation returned a surplus and this has been continued in 2010. The total income for the group has increased to £10.7m, up from £10.6m last year, which is a pleasing return given the difficult trading conditions. Those areas that have shown growth are examinations, which has seen income grow to £567,000, and quality assurance, which saw income up £109,000 to £367,000 in the year. The rental income derived from the London office was £167,000 for the year, while the Learning Centre, launched in April 2009, generated an income of £176,000, which was up from £48,000 the year before.

The trading arm of the Society, BPS Communications Ltd, is responsible for all Society advertising. The company has had a difficult few years and after a thorough review of its activities it was decided to

outsource the advertising function from 1 January 2011. A five-year contract was signed with Redactive Media Services and the Society looks forward to working with them.

Expenditure

Society expenditure is well controlled and in 2010 has seen a decrease from £10.2m to £9.9m. This is due to the actions of both members and staff alike. Employment costs continue to be the largest expense and in 2010 the total was just under £3.5m which was down from £3.8m the year before. Staff and salary details are reported in Note 8 on page 19 of the full statutory accounts.

Travel and meeting costs have been falling over the last few years as members and staff devise new ways of working. In 2009 the total cost was £519,000 and this has been reduced in 2010 to £454,000.

The Society has continued to develop its IT infrastructure and in 2010 the level of expenditure increased to just under £267,000. The growth in new technology has been evident within the printing department where a new 'on demand' colour printer was purchased during the year and now greater use is being made of uploading material straight to the web. This allows members and the general public to download material as and when it is required.

You will be aware that in 2009, it was agreed to outsource the subscriptions function to a trusted external partner. This has been well received by members and there has been positive feedback on the level of service. Another outsourced area has been building services. In 2010 the total cost for both the Leicester and London offices was £428,000, which includes all aspect of security, health and safety, and maintenance.

I and my fellow Trustees are grateful to all the Society members and staff who have achieved these cost savings over the past year.

Governance and internal control

The majority of Trustees serve for a three-year period and may be re-elected for one further three-year period. The Trustees meet at regular intervals during the year to review strategy and performance and to set the operating plans and budgets. The Presidential team comprises three posts: President, President Elect and Vice President. The same person fills each post in consecutive years, but each post is for one year's duration.

Charity legislation requires the Trustees to prepare consolidated financial statements for each financial year which give a true and fair view of the state of affairs of the Society and of the surplus or deficit for that period. In preparing those consolidated financial statements, the Trustees have:

- selected suitable accounting policies and then applied them consistently;
- made judgements and estimates that are reasonable and prudent;
- stated whether applicable accounting standards have been followed, subject to any material departures disclosed and explained in the consolidated financial statements; and
- prepared the consolidated financial statements on the going concern basis.

The Trustees have overall responsibility for ensuring that the Society has appropriate systems of controls, financial and otherwise. They are also responsible for keeping adequate accounting records which disclose with reasonable accuracy at any time the consolidated financial position of the Society and enable them to ensure that the consolidated financial statements comply with Regulation 7 (2) of the

Charities (Accounts and Reports) Regulations 2005 (SI2005/572). They are also responsible for safeguarding the assets of the Society and hence for taking reasonable steps to ensure the prevention and detection of fraud and other irregularities.

In so far as the Trustees are, individually, aware:

- there is no relevant audit information of which the Society's auditor is unaware; and
- the Trustees have taken all steps that they ought to have taken to make themselves aware of any relevant audit information and to establish that the auditor is aware of that information.

Investment policy and returns

The Society investments were professionally managed by Rensburg Sheppards during the year and the Trustees have decided that they wish investments to be subjected to moderate risk within a balanced portfolio and the Trustees have agreed a policy of ethical investment. The last year has seen improved returns and this is reflected in the accounts.

Society reserves

The Trustees have reviewed the reserves of the Society in line with guidance from the Charity Commission. They have included Unrestricted Funds, Restricted Funds and the Designated Funds and have agreed the following:

Unrestricted Funds. The Trustees feel that they need to take a prudent view of the future in order to be able to maintain the viability of the organisation. They have decided that a reserves level equivalent to nine months' income is appropriate for an organisation of this size and complexity.

Restricted Funds. The Society has a number of restricted funds at its disposal, and the Trustees are reviewing ways in which these funds can be used in accordance with their restriction.

Designated Funds. These funds represent amounts set aside for improvements to the infrastructure of the organisation, particularly IT and property improvement. A transfer to this Fund this year was agreed. The aim is to provide funds for the future development and refurbishment of the Leicester office.

Achievements and performance

The Trustees are aware of their obligations in respect of Charities and Public Benefit as defined by the Charities Act 2006. Below are just some of the things that the Society has achieved over the past year relevant to its objectives.

1. Membership Standards Board. A new education governance structure was implemented and the Membership and Professional Training Board is now called the Membership Standards Board (MSB), with a responsibility to maintain and enhance the reputation of the Society. This is achieved by ensuring that high standards are consistently set and maintained in respect of admission to membership, membership upgrades and transfers, Society qualifications, registrations and professional development.

2. BPS Learning Centre. The Learning Centre has gone from strength to strength, with new e-Learning modules proving popular. There has also been a rise in CPD event attendance, testament to the choices available and an indication of how important lifelong learning is to maintaining a professional career. Over 16,000 members have registered their CPD via myCPD, the Society's online system, and the online shop is becoming the most popular way for members to register for these events.

3. *Accreditation through partnership.* Our new accreditation through partnership model for engagement with universities and students was launched in September 2010. Focusing on quality enhancement, this new model is based on principles of collaborative work in the spirit of supportive enquiry. It aims to make the experience of psychology students, trainees, staff and employers as positive as possible.

4. *Committee on Test Standards and the Psychological Testing Centre.* As part of the 2008 strategy, the Committee on Test Standards has been working towards the development of standards covering all contexts for testing including work, education and health.

5. *Conferences and Events.* Over 6200 delegates attended a Society organised event in 2010, an increase of 28 per cent from the year before. In 2010 both Student Lectures events sold out completely. The Nottingham Lectures attracted 400 students and the London Lectures saw 820 attend.

6. *Research Digest – Best Blog 2010.* The Research Digest service was voted best psychology blog in the International Research Blogging Awards for 2010. The editor, Dr Christian Jarrett, has also built a large following via Twitter and Facebook. There are a number of plans and proposed developments for 2011 and the Society recently launched a second blog that specialises in occupational psychology.

7. *Sharing our Science public event.* At the beginning of 2010 the Society launched Sharing our Science with a public event entitled 'Psychology and Climate Change: Collective solutions to a global problem'. The event was huge success and more events are planned throughout 2011.

8. *The Psychologist.* In 2010 *The Psychologist* included issues on social inclusion, pregnancy and the history of experimental psychology. This last issue was accompanied by a timeline poster produced in collaboration with the Experimental Psychology Society and the Higher Education Academy Psychology Network. There are plans throughout 2011 for more special features in the publication.

Public benefit

The Trustees have considered this matter, in conjunction with the guidance contained in the Charity Commission's general guidance on public benefit, and have concluded that:

- the aims of the organisation continue to be charitable;
- the aims and work done give identifiable benefits to the charitable sector and that members of the public are aware of the high standards and education that members achieve;
- the benefits are for the public, are not unreasonably restricted in any way and certainly not by ability to pay;
- there is no detriment or harm arising from the aims or activities;
- the public are made aware of developments in the profession and the science that affect their daily lives;
- membership fees are modest and that there is a grade of membership that is open to the public who share an interest in the profession; and:
- the courses and the website are available to all and not just members.

Risk assessment

The Trustees are aware of their responsibilities in terms of Risk Assessment. A small committee of the Trustees met twice in 2010 and this group includes representatives from the Trustee body as well as the Finance Director. The Risk register was revised to better reflect the risks to which the Society is currently exposed.

Employee involvement and employment

Society employees have been consulted on issues of concern to them by means of regular staff information and consultation meetings and where appropriate individual consultation has taken place. All employees are regularly kept up to date on specific matters by department directors. The Society continues to negotiate with the recognised trade union, Unite, on all matters regarding terms and conditions of employment.

Auditors

RSM Tenon Audit Ltd are responsible for the audit of the Society and their help and advice is appreciated by the Trustees and Management Team.

Dr R.D.R. Mallows

Honorary Treasurer, 25 March 2011

INDEPENDENT AUDITOR'S STATEMENT TO THE TRUSTEES

We have examined the summarised financial statements which comprise the Consolidated Statement of Financial Activities and the Consolidated Balance Sheet. These are non-statutory accounts prepared for the purpose of inclusion in the charity's Annual Review.

This report is made solely to the Trustees of The British Psychological Society as a body, in accordance with *Accounting and Reporting by Charities: Statement of Recommended Practice* (SORP 2005). Our audit work has been undertaken so that we might state to the Trustees those matters we are required to state to them in an auditor's report and for no other purpose. To the fullest extent permitted by law, we do not accept or assume responsibility to anyone other than The British Psychological Society and the Trustees as a body for our audit work, for this report, or for the opinions we have formed.

Respective responsibilities of the Trustees and auditors: The Trustees are responsible for preparing the summary financial statements in accordance with the recommendations of *Accounting and Reporting by Charities: Statement of Recommended Practice*. Our responsibility is to report to you our opinion on the consistency of the summary financial statements with the full financial statements and Trustees' annual report. We also read the other information contained in the summary annual report and consider the implications for our report if we become aware of any apparent misstatements or material inconsistencies with the summary financial statements.

Basis of opinion: We conducted our work having regard to Bulletin 2008/3, The Auditors' Statement on the Summary Financial Statement, and Practice Note 11, The Audit of Charities, issued by the Auditing Practices Board for use in the United Kingdom.

Opinion: In our opinion, the summarised financial statements are consistent with the full financial statements and the Trustees' annual report of The British Psychological Society for the year ended 31 December 2010.

RSM Tenon Audit Ltd
Registered Auditor, Nottingham

Abridged financial information

Consolidated Statement of Financial Activities for year ended 31 December 2010

	2010 General Funds £000	2010 Designated Funds £000	2010 Restricted Funds £000	2010 Total £000	2009 Total £000
Incoming resources					
Activities in furtherance of the Charity's objectives					
Subscriptions	5,302	–	–	5,302	5,104
Registers and directories	482	–	–	482	556
Conferences and events	1,002	–	–	1,002	1,267
Journals and book publishing	1,346	–	–	1,346	1,262
Other income and grants	1,663	–	–	1,663	1,312
Activities for generating funds					
Trading income	688	–	–	688	858
Investment income	187	–	–	187	206
Total incoming resources	10,670	–	–	10,670	10,565
Resources expended					
Costs of activities in furtherance of the Charity's objectives					
Advancement of psychology	1,375	–	24	1,399	1,487
Application of psychology	1,656	–	–	1,656	1,931
Conferences and events	1,057	–	–	1,057	881
Cooperation with other organisations	202	–	–	202	206
Diffusion of knowledge	1,586	–	–	1,586	1,625
Examinations and training	985	–	–	985	1,002
Membership and conduct	1,771	–	–	1,771	1,804
Science and policy	607	–	–	607	618
Governance	98	–	–	98	94
Costs of generating funds					
Trading costs	468	–	–	468	507
Investment management fees	28	–	–	28	24
Total resources expended	9,833	–	24	9,857	10,179
Net incoming / (outgoing) resources before transfers	837	–	(24)	813	386
Transfers between funds	(190)	190	–	–	–
Net incoming / (outgoing) resources after transfers	647	190	(24)	813	386
Gains on investments	548	–	–	548	710
Net movement in funds	1,195	190	(24)	1,361	1,096
Funds brought forward as at 1 January 2010	7,762	810	125	8,697	7,601
Funds carried forward as at 31 December 2010	8,957	1,000	101	10,058	8,697

Consolidated Balance Sheet at 31 December 2010

	2010	2009
	£000	£000
Fixed assets		
Tangible assets	4,509	4,664
Investments	5,819	4,954
	10,328	9,618
Current assets		
Debtors	1,441	526
Cash at bank and in hand	1,589	848
	3,030	1,374
Creditors: Amounts falling due within one year	(2,980)	(2,295)
Net current liabilities	50	(921)
Total assets less current liabilities	10,378	8,697
Creditors: amounts falling due after more than one year	(320)	–
	10,058	8,697
Represented by:		
Income funds		
General funds	8,957	7,762
Designated funds	1,000	810
	9,957	8,572
Unrestricted funds	101	125
Restricted funds		
Total funds	10,058	8,697

The summary financial information is not the statutory accounts but it has been extracted from the Society's audited financial statements for the year ended 31 December 2010 on which an unqualified audit opinion was given. The financial statements were approved by the Board of Trustees on 25 March 2011 and have been sent to the Charity Commissioners. These summarised financial statements may not contain sufficient information to allow for a full understanding of the financial affairs of The British Psychological Society. Copies of the full financial statements may be obtained from the Society's Leicester office, St Andrews House, 48 Princess Road East, Leicester LE1 7DR.

Professor P.F. Maras
Honorary General Secretary

Dr R.D.R. Mallows
Honorary Treasurer

Board of Trustees & Chairs of Boards and Committees of the Society

Board of Trustees

President and Chair	Dr Gerry Mulhern
President Elect	Professor Noel Sheehy
Vice President	Ms Sue Gardner
Honorary General Secretary	Professor Pam Maras
Honorary Treasurer	Dr Richard Mallows
Chair, Professional Practice Board	Dr Carole Allan
Chair, Membership & Professional Training Board (<i>until June 2010</i>)	Dr Peter Banister
Chair, Membership & Standards Board (<i>from June 2010</i>)	Dr Peter Banister
Chair, Research Board	Professor Judi Ellis
Chair, Publications & Communications Board	Dr Graham Powell
Chair, Psychology Education Board	Dr Richard Latto / Professor Dorothy Miell

Representative Council Appointments

Chair, Representative Council (Observer)	Professor Maurice Stringer
Representative Council Cooptees	Dr Richard Mallows Professor Graham Turpin Professor Jill Wilkinson Emeritus Professor Ken Brown

Chairs of Standing Committees

Ethics Committee	Mr Richard Kwiatkowski / Dr Tony Wainwright
Joint Committee for Psychology in Higher Education	Professor William Marlsen-Wilson

Chairs of Other Committees

Membership & Professional Training Board (until June 2010)

Board of Assessors in Clinical Psychology	Dr Hessel Willemsen
Board of Assessors in Clinical Neuropsychology	Dr Jody Warner-Rogers
Board of Assessors in Educational Psychology (Scotland)	Mr Richard Walsh
Board of Assessors in Forensic Psychology	Dr Julie Harrower
Board of Assessors in Health Psychology	Dr Mark Forshaw
Board of Assessors in Occupational Psychology	Dr George Delafield
Board of Assessors in Counselling Psychology	Professor Pam James
Board of Assessors in Sport & Exercise Psychology	Mr Ian Maynard
Committee on Training in Clinical Psychology	Mr Andrew Cuthbertson
Committee for Training in Clinical Neuropsychology	Professor Gus Baker
Training Committee in Counselling Psychology	Mr Allan Winthrop
Division of Educational & Child Psychology Training Committee	Mr Graham Pratt
Division of Forensic Psychology Training Committee	Professor Elizabeth Gilchrist
Division of Health Psychology Training Committee	Mr Neil Coulson / Dr Lyn Dunwoody
Division of Occupational Psychology Training Committee	Mr Stephen Fisher
Division of Sport & Exercise Psychology Training Committee	Mr David Shaw
Scottish Division of Educational Psychology Training Committee	Ms Fiona Yarrow

Where there was a change during the year, both members are listed

Fellowships Committee	Dr Christopher Williams
Admissions Committee	Dr Sarah Brown
Standing Committee for Continuing Professional Development	Dr Joanne Thatcher
National Occupational Standards in Psychology Steering Committee	Vacant
Registration Committee for Psychologists Specialising in Psychotherapy	Professor David Lane
<i>Membership Standards Board (from June 2010)</i>	
Membership Standards Board	Dr Peter Banister
Committee for Test Standards	Dr Pat Lindley
Qualifications Standards Committee	Dr Mark Forshaw
Partnership and Accreditation Committee	Professor Tom Cox
<i>Professional Practice Board</i>	
Standing Committee on Psychology in Health & Social Care	Professor Peter Kinderman
Workforce Planning Advisors Standing Committee	Mr Tim Cate
Expert Witness Advisory Group	Professor Jane Ireland
<i>Psychology Education Board</i>	
Standing Committee on Psychology Education for Other Groups	Ms Viv Brunsdon
Standing Committee on Pre-tertiary Education	Mr Philip Banyard
Student Members Group	Ms Annabel Harris / Ms Sophie Bagge
Award for the Excellence in Teaching of Psychology	Dr Richard Latta / Professor Dorothy Miell
<i>Publications and Communications Board</i>	
Media & Press Committee and Honorary Press Officer	Dr Fiona Jones
<i>The Psychologist</i> and Digest Policy Committee	Dr Paul Redford / Professor David Lavalley
Journals Committee (<i>disbanded October 2010</i>)	Professor Stephen Morley
Editorial Advisory Group (<i>established October 2010</i>)	Professor Andrew Tolmie
Standing Conference Committee	Emeritus Professor Ken Brown
<i>Research Board</i>	
History of Psychology Committee	Dr Alan Collins

Chairs of Divisions, Sections, Branches and Special Groups

Division of Clinical Psychology	Dr Jenny Taylor
Division of Counselling Psychology	Dr Barbara Douglas
Division of Educational & Child Psychology	Dr Harriet Martin
Scottish Division of Educational Psychology	Ms Jean Campbell
Division of Forensic Psychology	Dr Carol Ireland / Mr Giles McCathie
Division of Health Psychology	Dr Alison Weardon
Division of Neuropsychology	Professor Huw Williams
Division of Occupational Psychology	Ms Antonia Dietmann
Division of Sport & Exercise Psychology	Professor David Lavallee
Division for Teachers & Researcher in Psychology	Dr Jacqueline Taylor
Cognitive Psychology Section	Dr Catriona Morrison
Consciousness & Experiential Psychology Section	Dr Susan Stuart
Developmental Psychology Section	Dr Charles Lewis
History & Philosophy of Psychology Section	Dr Geoffrey Bunn
Psychology of Sexualities	Dr Lyndsey Moon
Mathematical, Statistical & Computing Section	Professor David Clark-Carter
Psychobiology Section	Mr Philip Murphy
Psychology of Education Section	Dr Kevin Wall
Psychology of Women Section	Dr Christine Horrocks
Psychotherapy Section	Ms Angela Douglas
Qualitative Methods in Psychology Section	Dr Anna Madill
Social Psychology Section	Professor Evanthia Lyons
Transpersonal Psychology Section	Ms Ingrid Slack
North East of England Branch	Ms Roxane Gervais
Northern Ireland Branch	Professor Carol McGuinness
North West of England Branch	Ms Tina Thomas
Scottish Branch	Ms Elizabeth Baikie
South West Branch	Mr Christopher Kent / Miss Claire Wanless
Welsh Branch	Mr Nick Perham
Wessex Branch	Dr Kathryn Fielden
West Midlands Branch	Dr Emma McDonald
Special Group in Coaching Psychology	Dr Angela Hetherington
Special Group for Psychologists & Social Services	Dr John Newland

Honorary Appointments

Chair of Trustees, BPS Welfare Fund	Dr Janet Carr
-------------------------------------	---------------

Honorary Officers

President
President-Elect
Vice President
Honorary General Secretary
Honorary Treasurer
Chair, The Representative Council
Vice Chair, The Representative Council

Dr Gerry Mulhern
Professor Noel Sheehy
Ms Sue Gardner
Professor Pam Maras
Dr Richard Mallows
Professor Maurice Stringer
Dr Gerry Mulhern

*Elected Members under the previous
Statutes and Rules*

Professor Malcolm Adams
Dr George Delafield
Dr Gene Johnson
Dr Christina Liossi
Ms Pauline Willis

Representative Council Members

Professor Malcolm Adams
Dr Jacqui Akhurst
Dr Carole Allan
Ms Elizabeth Baikie
Dr Peter Banister
Mr Mike Berry
Professor Gavin Bremner/ Professor Charlie Lewis
Emeritus Professor Ken Brown
Dr Geoff Bunn
Ms Jean Campbell
Mr David Carew
Professor David Clark-Carter
Dr Rose Capdevila Sola
Dr George Delafield
Dr Barbara Douglas
Professor Judi Ellis
Mr Alan Gilbert / Dr Kathryn Fielden
Dr Philippa Griffiths
Diana Harcourt / Dr Alison Wearden
Miss Annable Harris / Miss Sophie Bagge
Dr Carol Ireland / Mr Giles McCathie
Dr Gene Johnson
Mr Chris Kent
Mr Richard Kwiatkowski / Dr Tony Wainwright
Dr Richard Latto / Professor Dorothy Miell
Dr Ho Law
Dr Jane Leadbetter

Dr Christina Liossi
Professor Evanthia Lyons
Dr Anna Madill
Dr Richard Mallows
Professor William Marslen-Williams /
Professor Vicki Bruce
Dr Catriona Morrison
Dr Philip Murphy
Dr Nick Perham / Dr John Boddy
Dr Graham Powell
Mrs Karen Powell-Williams
Dr Paul Redford / Dr David Lavalley
Ms Christina Richards / Dr Lyndsey Moon
Ms Emma Shackle
Ms Ingrid Slack
Dr Catherine Steele
Professor Maurice Stringer / Professor Carol
McGuinness
Dr Jacqueline Taylor
Dr Jenny Taylor
Dr Jo Thatcher
Professor Graham Turpin
Dr Karl Wall
Dr Simon Whitaker / Ms Roxane Gervais
Professor Jill Wilkinson
Ms Pauline Willis

Where there was a change during the year both members are listed.

Appendix II: Membership figures

Register of Chartered Psychologists

At 31 December	Full	EPC†	Total	CONDITIONAL LIST
1989	4692	942	5634	158
1990	5117	1090	6207	270
1991	5390	1164	6554	370
1992	5689	1216	6905	404
1993	6143	1214	7357	436
1994	6564	1167	7731	377
1995	6963	1099	8062	327
1996	7333	1121	8454	345
1997	7643	1126	8769	321
1998	7890	1116	9006	306
1999	8277	1065	9342	296
2000	8689	1060	9749	284
2001	9072	1102	10,174	288
2002	9469	1142	10,611	350
2003	10,005	1250	11,295	496
2004	10,711	1,350	12,061	687
2005	11,376	1,566	12,942	792
2006	12,020	1,870	13,890	1,048
2007	12,778	2,032	14,810	1,268
2008	14,836	2,105	16,941	1,491
2009	16,228	2,031	18,259	+

† Full, with Exemption from Practising Certificate; + The Conditional List became defunct on 1 July 2009, when statutory regulation through the HPC came into effect and the Society's Register of Chartered Psychologists was superseded by the HPC's register of Practitioner Psychologists.

Division membership

At 31 December	DECP	SDEP	DCP	DOP	DFP	DCoP	DTRP	DHP	DoN	DSEP
1965	383	94								
1970	384	78	362							
1975	485	80	629	144						
1980	539	93	966	241	133					
1982	623	105	1242	267	166	225†				
1983	662	101	1341	294	167	237†				
1985	724	104	1574	317	199	439†	120+			
1986	756	98	1674	348	204	595†	204+	111‡		
1988	839	117	1917	452	223	958†	270+	316‡	115•	291++
1989	911	127	2150	518	232	1167†	304+	408‡	125•	354++
1990	972	131	2317	533	242	1221†	332+	559‡		458++
1991	1011	133	2393	568	258	1222†	346+	669‡		505++
1992	1042	136	2490	632	288	1208†	375+	743‡		504++
1993	1063	136	2680	661	312	1177†	411+	783‡	155•	552++
1994	1095	140	2810	745	360	1164	425+	774‡	199•	589++
1995	1102	140	2988	956	411	1154	404+	783‡	221•	587++
1996	1137	141	3184	1056	462	1193	417+	820‡	272•	599++
1997	1153	141	3474	1145	494	1226	421+	858‡	327•	548++
1998	1173	141	3731	1244	553	1260	305	849	399•	506++
1999	1206	147	3938	1353	599	1237†	326	868	436	349++
2000	1226	163	4210	1522	769	1280†	348	912	528	355++
2001	1265	175	4514	1635*	920	1356†	353	951	577	332++
2002	1257	176	4777	3092	1008	1353+	351	1015	628	322++
2003	1295	184	5124	3182	1271	1464+	367	1061	695	339++
2004	1336	198	5439	3200	1414	1581	373	1108	807	426
2005	1342	246	5884	3259	1604	1738	383	1156	809	592
2006	1425	273	6381	3390	1807	1947	407	1250	812	570
2007	1568	295	6863	3598	1896	2197	431	1363	830	556
2008	1941	364	8307	3812	1996	2560	510	1473	890	567
2009	2218	489	9783	3917	2088	2792	594	1567	951	584
2010	2227	442	9554	3872	2148	2892	609	1654	984	629

† The Counselling Psychology Section merged with the Special Group formed in 1989. The Special Group in Counselling Psychology became the Division in 1994; + The Special Group for the Teaching of Psychology became the Division for Teachers and Researchers in Psychology in 1998; ‡ The Health Psychology Section was redesignated as the Special Group in 1992. It became the Division of Health Psychology in 1998; • The Special Group in Clinical Neuropsychology became the Division of Neuropsychology in 1999; §The Division of Criminological & Legal Psychology was renamed the Division of Forensic Psychology in 1999; * Members of the Occupational Psychology Section transferred to the Division of Occupational Psychology at the end of 2001; ++ The Sport and Exercise Psychology Section became the Division for Sport and Exercise Psychology in 2004.

Special Group membership

At 31 Dec.	Central Government	Social Services	Coaching Psychology
1997	77	192	++
1998	†	184	++
2000	†	194	++
2001	†	188	++
2002	†	157	++
2003	†	154	++
2004	†	137	1571
2005	†	131	1977
2006	†	119	2069
2007	†	115	2204
2008	†	110	2359
2009	†	110	2298
2010		92	2332

† The Special Group for Psychologists in Central Government was disbanded in 1998. ++ The Special Group in Coaching Psychology was formed in 2004.

Branches

At 31 December	London & Home Counties	North West of England	Northern Ireland	Scottish	Welsh	Wessex	West Midlands	South West of England	North East of England
1989	+	1265	438	1131	542	1086			
1991	+	1481	523	1288	619	1311			
1995	+	2074	703	1688	859	2445	2128		
1997	+	2537	895	2015	1004	3152	2618		
1998	+	2558	909	2055	1039	3320	2770	1487	
1999	+	2653	998	2176	1102	3535	2933	1569	
2000	+	2693	1061	2274	1150	3656	3038	1628	
2001	+	2823	1184	2429	1267	3820	3213	1791	
2002	+	3000	1330	2561	1326	3944	3380	1966	
2003	+	3307	1468	2802	1460	4300	3797	2106	3759
2004	+	3586	1564	3014	1548	4568	4024	2223	3998
2005	+	3705	1590	3120	1595	4705	4201	2255	4177
2006	9963	3838	1696	3249	1637	4941	4314	2327	4428
2007	10188	3904	1822	3402	1585	5018	4429	2341	4525
2008	11757	4041	1951	3488	1555	5139	4606	2426	4565
2009	12096	4043	1974	3572	1581	5210	4585	2476	4589
2010	12017	3967	2096	3475	1583	5240	4578	2404	4473

The figures shown in this appendix represent the position at the end of the year. Differences between these and any figures reported by Sections, Divisions, Special Groups and Branches are due to timing variations.

+ The London & Home Counties Branch was formed in 2006.

Section membership

At 31 December

1941	272	280	117	125																
1950	433	657	254	253																
1960	458	533	281	308																
1970	388	718	483	497	310															
1975	366	776	530	486	270	565														
1976	349	732	555	525	268	559														
1979	291	595	538	510	197	500	225													
1980	234	573	548	527	210	504	225													
1981	286	569	569	513	218	501	225													
1982	281	554	570	492	222	507	219													
1983	273	545	598	484	208	504	217	72	92											
1984	265	525	635	497	203	492	227	68	126											
1985	251	506	653	504	216	540	276	84	124											
1986	246	494	825	558	210	580	347	112	144											
1988	474	628	1554	765	197	677	528	196	201	291										
1989	564	692	1843	795	190	721	563	204	218	354										
1990	655	702	2134	864	194	728	616	264	237	458										
1991	648	761	2181	867	200	733	642	263	243	505										
1992	652	752	2187	876	206	772	658	266	237	504										
1993	648	764	2252	894	210	787	683	269	240	552	210									
1994	654	768	2302	949	208	827	714	282	248	589	249									
1995	666	791	2299	938	215	823	719	292	246	587	302									
1996	665	798	2427	915	206	848	714	275	223	599	341	231								
1997	661	828	2398	836	198	814	705	277	225	548	343	278	269							
1998	652	802	2405	771	190	798	671	279	225	506	336	338	307							
1999	637	796	2417	761	192	776	652	260	223	466	349	362	325	299						
2000	631	757	2357	705	179	750	634	253	210	496	355	383	339	313						
2001	620	724	2284	675	178	725	601	237	208	523	332	366	330	300						
2002	578	646	*	601	161	678	535	208	206	427	322	337	297	272						
2003	590	609	*	579	158	650	525	206	202	402	339	344	277	273						
2004	576	583	*	541	155	625	515	193	194	368	†	353	282	260						
2005	573	531	*	495	147	591	487	175	190	337	†	366	275	263	1575					
2006	548	515	*	468	142	558	463	164	183	302	†	363	257	256	1398					
2007	517	482	*	438	137	516	438	149	180	294	†	360	242	245	1232					
2008	502	453	*	417	144	493	441	136	173	284	†	353	220	228	1139					
2009	485	432	*	402	138	473	438	137	160	270	†	338	198	221	1048					
2010	477	422	*	389	139	457	404	126	161	255	†	323	198	207	998	179				
	<i>Psychotherapy</i>	<i>Education</i>	<i>Occupational</i>	<i>Social</i>	<i>Maths, Stats & Computing</i>	<i>Developmental</i>	<i>Cognitive</i>	<i>Psychobiology</i>	<i>History & Philosophy</i>	<i>Psychology of Women</i>	<i>Sport & Exercise</i>	<i>Transpersonal</i>	<i>Consciousness & Experiential</i>	<i>• Sexualities</i>	<i>Qualitative Methods In Psychology</i>	<i>Community</i>				

† The Sport and Exercise Psychology Section became the Division of Sport and Exercise Psychology in 2004. * Members of the Occupational Psychology Section transferred to the Division of Occupational Psychology at the end of 2001. • The Lesbian & Gay Psychology Section was renamed the Psychology of Sexualities Section in 2009.

Overall membership

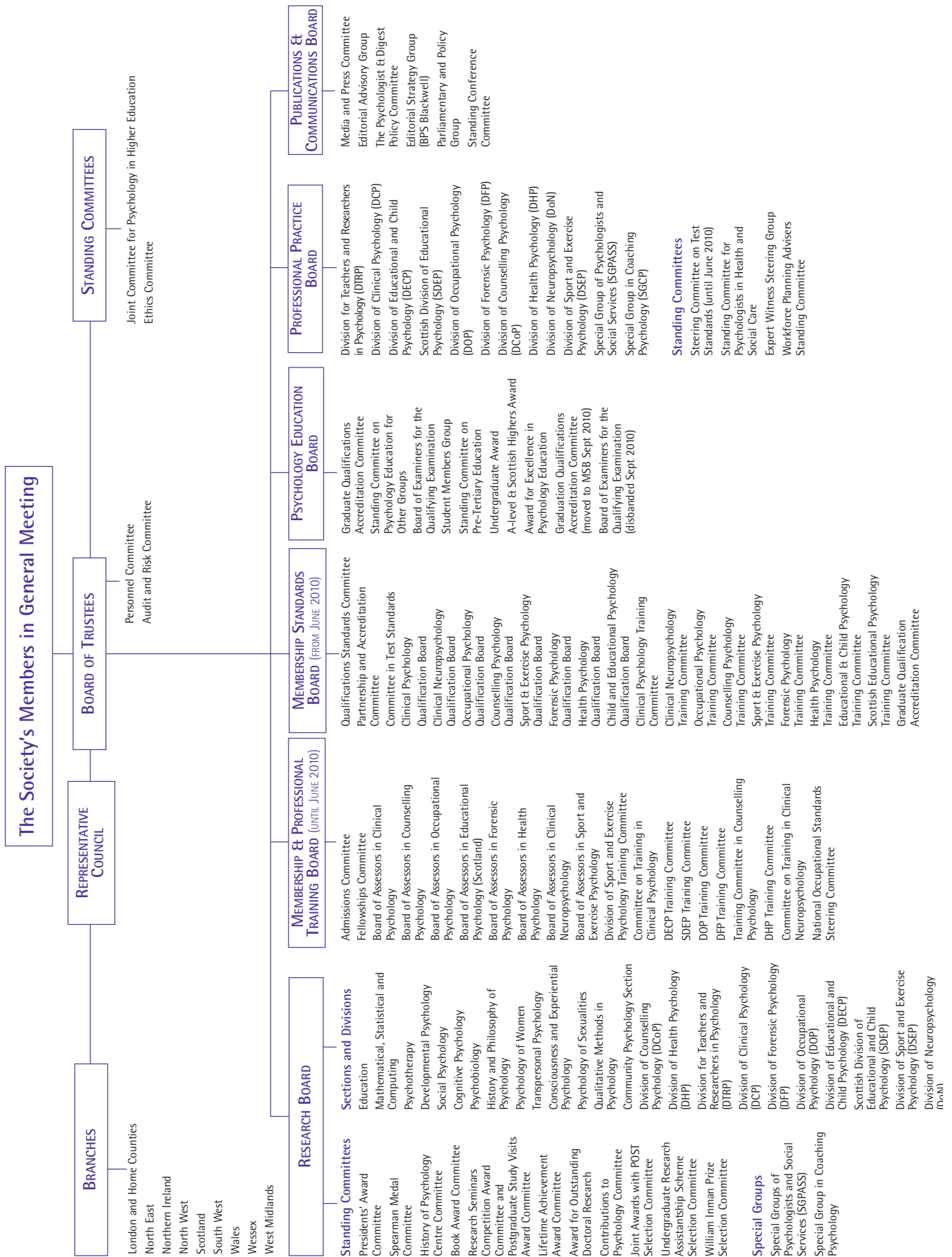
<i>At 31 Dec.</i>	<i>Hon. Fellows</i>	<i>Hon. Life Members</i>	<i>Associate Fellows</i>	<i>Graduate Members</i>	<i>Ordinary Members</i>	Total Members	<i>Foreign Affiliates</i>	<i>Student Affiliates</i>	<i>Subscribers</i>	Total List	
1941						811					
1945	14	235	225		590	1064					
1950	15	258	335		1289	1897					
1960	23	311	875	248	1198	2655		43	353		
1970	24	361	1381	1654	391	3811	55	96	1097	5059	
1975	20	385	1932	3212	299	5848	97	122	885	6952	
1979	22	414	1959	4519	216	7130	70	139	1108	8447	
1980	21	443	2004	4982	205	7655	63	147	1353	9218	
1981	22	442	2106	5519	195	8284	60	150	1340	9834	
1982	21	464	2184	5866	186	8721	82	156	1461	10,420	
1983	21	485	2260	6424	178	9368	99	171	1200	10,838	
1984	20	493	2326	6716	172	9727	113	183	1463	11,486	
1985	19	506	2407	7003	154	10,089	116	195	1443	11,843	
1986	19	517	2494	7377	148	10,555	120	215	1470	12,360	
1988	18	556	2930	8032	133	11,669	140	216	1220	13,245	
1989	19	625	3642	8616	129	13,031	139	223	1439	14,832	
1990	19	640	3873	9448	125	14,105	141	241	1527	16,014	
1991	19	2	659	3948	10,291	15,039	142	257	1738	17,176	
1992	18	4	661	4044	11,096	15,938	148	278	2086	18,450	
1993	19	5	663	4145	12,231	17,173	144	309	2514	20,140	
1994	21	6	663	4196	13,459	18,448	141	335	3518	22,442	
1995	22	7	657	4261	14,396	19,443	130	365	4666	24,604	
1996	22	9	665	4323	16,124	21,239	126	420	5823	27,608	
1997	25	9	666	4325	17,488	22,605	115	463	6477	29,660	
1998	25	8	676	4363	18,941	24,102	107	504	6351	31,064	
1999	25	8	696	4364	20,329	25,503	114	500	7421	33,538	
2000	23	9	665	4408	21,626	26,809	109	508	6763	34,189	
2001	22	9	663	4422	23,272	28,460	101	525	5607	34,693	
2002	20	9	662	4426	24,986	30,174	98	517	5688	36,477	
2003	20	7	664	4453	27,215	32,427	90	530	6931	39,979	
2004	21	8	650	4491	29,144	34,375	88	546	7485	42,494	
2005	19	7	628	4496	30,593	57	35,800	79	548	7337	43,764
2006	22	8	621	4527	32,372	51	37,601	76	606	7268	45,551
2007	25	8	612	4590	33,775	51	39,061	74	650	6890	46,675
2008	25	8	602	4656	35,056	48	40,395	97	620	7118	48,230
2009	26	8	614	4693	36,166	44	41,551	114	605	6751	49,021

	<i>Hon. Fellows</i>	<i>Hon. Life Members</i>	<i>Chartered*</i>	<i>Graduate**</i>	<i>Student Members</i>	Total Members	<i>Subscribers</i>	Total List
2010	27	9	17,938	23,265	6956	48,195	755	48,950

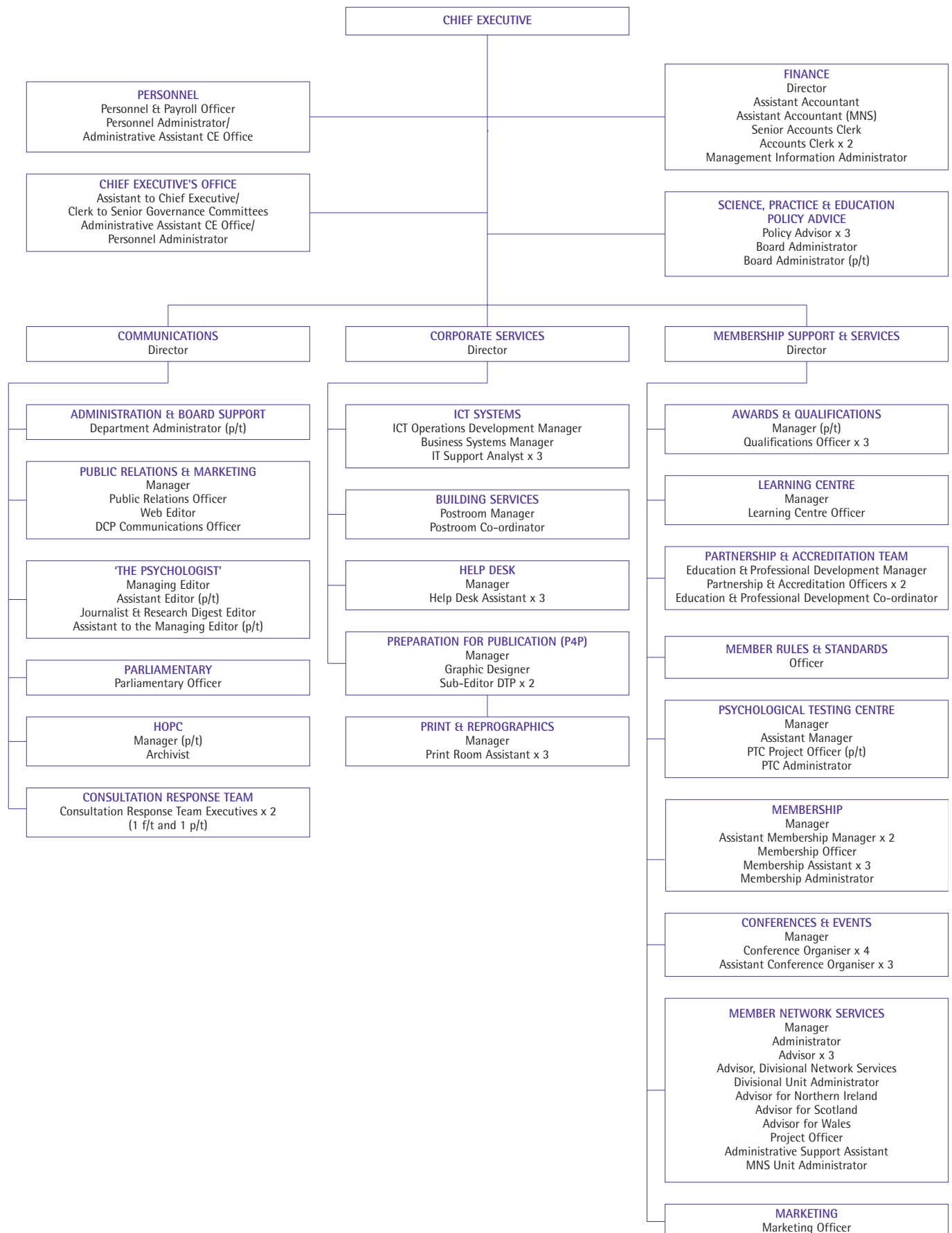
* Including 4414 Associate Fellows (AFBPsS) and 512 Fellows (FBPsS); ** Including 233 Associate Fellows (AFBPsS) and 100 Fellows (FBPsS)

Following recent changes to the Society's membership grades, there are now four grades of membership: Honorary, Chartered, Graduate and Student. These are reflected in the new columns for 2010 above. Ordinary Members have transferred to either Chartered or Graduate grades of membership. Affiliates and Foreign Affiliates are now all classed as subscribers.

Society structure



Office management structure



The British Psychological Society

Senior Management Team

Chief Executive
Director of Finance
Director of Corporate Services
Director of Membership Services & Support

Professor Ann Colley
Russell Hobbs
Mike Laffan
Simon Bowen

Registered Office

St Andrews House
48 Princess Road East
Leicester LE1 7DR

London Office

30 Tabernacle Street
London EC2A 4UE

Solicitors

Freeth Cartwright LLP
1 Colton Square
Leicester LE1 1QH

Independent Auditors

RSM Tenon Audit Ltd
Registered Auditor
1 Bede Island Road
Bede Island Business Park
Leicester LE2 7EA

Bankers

Royal Bank of Scotland plc
5 Market Street
Leicester LE1 6DN

Pension Advisors

BBT Financial Services
Independent Financial Advisors
Wrens Court
62 Victoria Road
Sutton Coldfield
West Midlands B72 1SY

Registered Charity No.

229642

Scottish Registered Charity No.

SC039452

For further information on the work of the Society and to download a copy of our annual report, please visit our website or contact us at:

w: www.bps.org.uk

t: +44 (0)116 254 9568

e: enquiries@bps.org.uk

The British Psychological Society
St Andrews House
48 Princess Road East
Leicester
LE1 7DR

