



The  
British  
Psychological  
Society



# Annual Report 2009

## THE SOCIETY

---

The British Psychological Society was founded in 1901 and incorporated by Royal Charter in 1965. Our sole Royal Charter objective is to promote the advancement and diffusion of the discipline and the usefulness of members.

### We:

- are the Learned and Professional body for the discipline;
- aim to make the science and practice of psychology accessible to everyone;
- aim to include in our membership all those who are engaged or interested in psychology;
- award Chartered Status to properly qualified members – there are over 18,000 Chartered Psychologists;
- give grants to support research, scholarship and public engagement activities;
- run a media centre to publicise the work of our members through the media to the wider public;
- represent the discipline by publishing policy statements and preparing responses to government consultations;
- provide evidence-based briefings and reports to the UK and devolved parliaments;
- hold numerous conferences, workshops, continuing professional development and training events;
- publish 11 scientific journals, and jointly publishes *Evidence-Based Mental Health* with the British Medical Association and the Royal College of Psychiatrists;
- publish *The Psychologist* magazine each month;
- publish textbooks under the BPS Blackwell imprint;
- provide a free Research Digest primarily aimed at school and university students (also available on the web at [www.bps-research-digest.blogspot.com](http://www.bps-research-digest.blogspot.com));
- provide ethical guidance and advice via our Ethics Committee to both our members and others;
- recognise distinguished contributions to psychological science and practice through individual awards, honours and Fellowships;
- accredit through an active partnership scheme both undergraduate and professional postgraduate university programmes;
- provide examinations that allow successful candidates to register with the Health Professions Council;
- help employers find the right psychologist through the Psychologist Appointments ([www.psychapp.co.uk](http://www.psychapp.co.uk)) section of *The Psychologist*;
- publish newsletters and occasional papers for our many specialist member networks;
- have positive working links with psychological societies and associations throughout the world;
- maintain a comprehensive website ([www.bps.org.uk](http://www.bps.org.uk)).

# CONTENTS

---

Message from the President	2
The Society offices	4
Financial report and summary accounts for the year	6
Board of Trustees and Honorary Officers of the Society	13
Membership figures	17
Society structure	20
Office management structure	21

---

## HONORARY FELLOWS & HONORARY LIFE MEMBERS

---

### Honorary Fellows

Professor A.D. Baddeley CBE CPsychol AFBPsS  
Professor G.M. Breakwell CPsychol  
Professor V.G. Bruce OBE CPsychol FBPSS  
Professor J.S. Bruner  
Professor D.V. Canter CPsychol  
Professor A.J. Chapman CPsychol FBPSS  
Professor N. Chomsky  
Professor D.M. Clark CPsychol FBPSS  
Emeritus Professor A.D.B. Clarke CBE  
CPsychol FBPSS  
Emeritus Professor A.M. Clarke CPsychol FBPSS  
Professor M. Donaldson FBPSS  
Professor U. Frith CPsychol  
Professor R.L. Gregory CBE FBPSS  
Professor M.R.C. Hewstone CPsychol FBPSS  
Professor R.A. Hinde  
Professor E. Loftus FBPSS  
Professor G.A. Miller

Professor J. Morton OBE CPsychol FBPSS  
Dr H.A. Murray  
Emeritus Professor P.M.A. Rabbitt  
Professor Sir M. Rutter CBE CPsychol FBPSS  
Professor H. Steinberg CPsychol FBPSS  
Emeritus Professor P.B. Warr CPsychol FBPSS  
Professor K.W. Wedell CBE CPsychol FBPSS  
Professor A.W. Young CPsychol  
Professor W. Yule CPsychol FBPSS

### Honorary Life Members

Dr H. Beloff CPsychol FBPSS  
Emeritus Professor R.M. Farr CPsychol FBPSS  
Miss J. Hulford  
Dr L.D. Kramer  
Emeritus Professor D. Legge CPsychol FBPSS  
Professor G.A. Lindsay CPsychol FBPSS  
Dr C.V. Newman CPsychol FBPSS  
Emeritus Professor J.K. Radford CPsychol FBPSS

The British Psychological Society  
St Andrews House  
48 Princess Road East  
Leicester LE1 7DR

Tel: 0116 254 9568  
Fax: 0116 247 0787  
E-mail: [mail@bps.org.uk](mailto:mail@bps.org.uk)  
[www.bps.org.uk](http://www.bps.org.uk)

## MESSAGE FROM THE PRESIDENT

---



*Sue Gardner*

In many ways 2009 was a year of climate change. I am thinking not of global warming – though the Society did organise a Parliamentary seminar on that – but of the new regulatory and economic climates in which we are all learning to operate because of statutory regulation and the credit crunch.

Some things do not change but are renewed. We agreed a new Strategic Plan for 2010–5, reaffirming our determination to be both a learned society and the professional body for the discipline and to make psychology accessible to all. We also highlighted the recruitment and retention of members and the improvement of our communications. An action plan has been drawn up to take us forward.

The pressures on the Society's income and loss of our regulatory function have made us more aware of the need to offer better services to our members if we are to fulfil those objectives, but they have also removed some constraints.

So 2009 saw the launch of the Society's Learning Centre. This new web portal provides information on our own training and professional development courses and events, and on those run by other providers we have approved.

The Learning Centre is also home to the myCPD system, which allows members to record any professional development they undertake, whoever it will ultimately be assessed by. We hope these developments will allow the Society to become the most important source for professional development in psychology.

These projects are examples of our determination to improve services to members more generally, as we streamline processes and make more use of information technology. Our aim is to ensure we are welcoming as an organisation, so we are keen to reach out to A level, undergraduate and postgraduate students, who are the future of the profession.

Another significant step forward was the launch of our History of Psychology Centre website. This is part of our programme of making the Society's archives available to researchers.

The climate is also changing in the field of research, with the publication of the proposed new Research Excellence Framework. The Research Board considered its implications for psychology – especially our classification as a science-based discipline. The Board will maintain a close watch on developments, particularly the composition of the assessment panel and the subject specific criteria, over the forthcoming year.

A highlight of 2009 was our Annual Conference in Brighton, which attracted nearly 600 delegates from around the UK and beyond. We received extensive coverage in the media, despite the rival attractions of the Obamas' visit and the G20 summit. We were also pleased to welcome representatives from UK organisations and from other psychology associations across Europe and the rest of the world.

One of the pleasures of being President is attending events organised by our Boards, Branches, Sections, Divisions and other member networks. I cannot mention all those I attended, but I have lasting memories of warm welcomes and lively discussions.

The Society's publications have continued to develop. A landmark was the appearance of Volume 100 of the *British Journal of Psychology*, celebrated with a special issue containing classic articles by pre-eminent figures like Watson and Piaget. Free access to this issue was made available via the Journals website for the whole of May.

Our monthly magazine *The Psychologist* has increased its presence on the web, together with the popular and free electronic Research Digest bulletins and blog, which contain useful and interesting summaries of recently published papers. I continue to be impressed by the quality and quantity of publications produced by the Society's member networks. These range from the journals to scholarly collections of papers to informative newsletters.

None of these developments would have been possible without the enthusiasm, hard work and good will of Society staff. Nor could we function without the time and energy that our members so freely give. I should like to thank everyone involved: your commitment is greatly appreciated. I would particularly like to thank the senior management team led by our chief executive, Professor Ann Colley, the Representative Council and the Board of Trustees.

On 1 July, like all practitioner psychologists who were members of one of the seven of our Divisions to be registered, my name was automatically transferred on to the Health Professions Council register. Soon afterwards I received a booklet from the Society that described the advantages of both achieving Chartered status and of Society membership in general.

This membership is even more important now that we can concentrate on developing the knowledge base, science, applications and practice of psychology. You will see from this report how impressive our activities are across all these areas.

**Sue Gardner**

President

**Dr Elizabeth Campbell**

It is with great regret that we have to announce that Dr Elizabeth Campbell, Vice President of the Society, lost her battle against cancer and passed away on Friday 2 April 2010.

Whilst Liz will be greatly missed by her friends and colleagues, her dedication and contributions to psychology and the Society will live on in our memory.

Our thoughts are with her family and friends at this difficult time.

## THE SOCIETY OFFICES

---



*Professor Pam Maras*

First of all, I would like to thank Derek Holman, who retired from his post of personnel manager for the Society during the year, for his dedication to the Society and support for staff over many years of service.

The Chief Executive and staff across the office have worked hard to make changes to some of the Society's functions following the regulation of practitioner psychology by the Health Professions Council (HPC) in June 2009. Data transfer to the HPC was completed in a seamless and secure manner, overseen by the director of corporate services Mike Laffan. A reduction in the headcount from 123 in January 2009 to 102 by December 2009, as a consequence of necessary changes post HPC and an ongoing financial deficit, was achieved via natural wastage and compulsory and voluntary redundancies.

The Society renewed the recognition and negotiating agreement with Unite for a further three years in September. The Joint Negotiating

Committee (JNC) has worked on a retirement policy and procedure and guidelines on avoiding discrimination in recruitment, updated the disciplinary procedure and continued to discuss harmonising terms and conditions for Society employees. Independent consultants completed the re-evaluation of all roles within the Society in September, and Trustee and Unite representatives agreed new grade boundaries to allocate the new scores into the Society's recently adopted eight-grade salary scale.

The JNC works hard in ensuring the best possible terms and conditions for employees, and I would personally like to thank all members of the JNC for their time and commitment to the organisation. Topics for 2010 include the continued harmonisation of terms and conditions, together with the issuing of a single contract for all staff. I look forward to working on these projects with JNC.

The updating of the Society's intranet will provide the personnel department with the opportunity to review policies and procedures and introduce new guidance on the forthcoming Equality Act. The Society's personnel database had a long overdue update in August. The new system has greater functionality and enhanced features to support the work of the personnel department.

Once again we have restricted investment in the Society building assets to remedial and essential works, and planned redevelopment of the reception area in Leicester was postponed to keep costs to a minimum. Despite many cost-saving measures throughout the year, there have been some notable achievements. The service kitchen in Tabernacle Street was upgraded to include an industrial dishwasher; this has enabled full use of the pure water system, reducing the need to purchase bottled water for meetings. Although use of the London meeting rooms by members has reduced by 10 per cent on last year, income levels have been maintained through the release of spare capacity to external hirers. Mailing and printing costs continue to be managed well and further significant cost savings have been made during the

year. This has been possible through better usage of bulk mailing options, an increased usage of technology and improved printing procedures and hardware.

Planned investment in improved system technology, which is more energy efficient, has resulted in an overall 8 per cent reduction in energy usage at the Leicester office. The expansion of the remit of the help desk to provide initial support for building maintenance issues has helped improve the facilities management services and has resulted in a virtually clean sheet from an external health and safety audit.

In line with our IT strategy agreed in January 2008, development of our systems-based services has continued and the core systems environment and communication network enhancements are now fully complete. These bring significantly more capacity for the future development of services along with a lower cost of ownership. In addition, the launch of the BPS Shop web service was well received and is already proving to be a valuable resource to members for publications, events and Learning Centre bookings. It is generating an additional revenue stream which contributes to our working cash flow. Our Learning Centre was launched in the first half of the year and is proving to be an early success and a valuable addition to the services provided by the Society.

The past year has been a challenging one for the office with many changes necessitated by the loss of our regulatory function and the economic situation. Our staff have risen to these challenges and better processes and service developments have been achieved. On behalf of the Trustees I would like to thank the chief executive and all the Society's employees for their dedication, commitment and hard work.

***Pam Maras***

Honorary General Secretary

# FINANCIAL REPORT & SUMMARY ACCOUNTS FOR THE YEAR

---



*Dr Richard Mallows*

Society by setting up a high standard of professional education and knowledge’.

The Trustees are pleased to present their Report and Accounts of the Society and the trading subsidiary for the year ended 31 December 2009. The Society operates both in the UK and worldwide and is registered with the UK Charity Commission under registration number 229642. The Society is also registered in Scotland under registration number SC039452. The Trustees are responsible for ensuring that the financial statements prepared give a true and fair view of the group's activities and are presented in accordance with the Statement of Recommended Practice (SORP) 2005.

## **Structure, governance and management**

The Society is governed by Royal Charter originally granted in February 1965 and subsequently revised, the last update being in October 2007. The object is ‘to promote the advancement and diffusion of a knowledge of psychology pure and applied and especially to promote the efficiency and usefulness of members of the

Society information including the details of the Chief Executive and the Trustees can be found on the back page of the full statutory accounts. The Trustees are responsible for the governance of the Charity while the day to day management is devolved to the Chief Executive, Professor Ann Colley and the Senior Management Team. The senior managers are: Simon Bowen (Director of Membership Support and Services), Russell Hobbs (Director of Finance), Mike Laffan (Director of Corporate Services) and Stephen White (Director of Communications).

## **General and financial activities**

The Consolidated Statement of Financial Activities for the year is set out on page 8 of the full financial statements

## **Review of 2009**

2009 was always going to be a difficult trading year, not helped by the worldwide economic downturn. Following a poor performance in 2008 it was agreed that a review of the income and costs would be conducted to identify potential savings. In the early part of the year a cost saving initiative was implemented and this included a number of staff redundancies. As a result, the cost base of the Society has been significantly reduced in 2009. Regular reviews will continue to be undertaken to ensure that the organization is run in the most cost effective way to support current operations and future development.

## **Income generation**

Income for the year has held steady in the face of difficult trading conditions. Total income for the year was £10.5m which was an increase of £32,000 on the previous year. Subscription income increased slightly from £5.01m to £5.07 but Register and Directory income reduced significantly from £898,000 to £556,000. This was due to two significant changes during the year. The first being Statutory Regulation. Since 1 July 2009 the Society has not issued

Practising Certificates for members with Chartered Status and the loss of income is reflected in this figure. Secondly, the Directory of Chartered Psychologists and Expert Witnesses is being relaunched in 2010 and therefore members have not been charged for their entry in 2009. Journal income has proved buoyant in the year but the trading income from BPS Communications Ltd which deals exclusively with advertising has suffered significantly in the face of difficult trading conditions.

## Expenditure

As stated above, Society expenditure has been considerably reduced this year due to the actions both of the staff and members. The salary total for 2008 was £4.1m and this has been reduced to £3.8m this year. This includes £127,000 in redundancy payments. The necessity for face-to-face meetings has been reviewed and greater use has been made of teleconferences and web based facilities. As a result, travel costs for the year have been reduced to £519,000. Greater use of electronic communications has reduced printing and stationery costs, with a significant amount of printed output being posted directly to the web for immediate download. A review of postage services has seen a reduction of costs to £230,000, down from £242,000 for the same period last year. The Trustees are aware of the need for the Society to continue to develop and grow so as to meet the needs of the membership so such savings are essential to enable new initiatives to be supported.

## Governance and internal control

The majority of Trustees serve for a three-year period and may be re-elected for one further three-year period. The Trustees meet at regular intervals during the year to review strategy and performance and to set the operating plans and budgets. Mindful of the need for cost savings, the number of Trustee meetings during the year was reduced.

The Presidential team comprises three posts: President, President Elect and Vice President. The same person fills each post in consecutive years; each post is for one year's duration.

Charity legislation requires the Trustees to prepare financial statements for each financial year. These statements must give a true and fair view of the state of affairs of the Society and of the surplus or deficit for that period.

In preparing those financial statements, the Trustees have:

- selected suitable accounting policies and applied them consistently;
- made judgements and estimates that are reasonable and prudent;
- stated whether applicable accounting standards have been followed, subject to any material departures disclosed and explained in the financial statements; and
- prepared the financial statements on the going concern basis.

The Trustees have overall responsibility for ensuring that the Society has appropriate systems of controls, financial and otherwise. They are also responsible for keeping proper accounting records that disclose with reasonable accuracy at any time the financial position of the Society and enable them to ensure that the financial statements comply with Regulation 7 (2) of the Charities (Accounts and Reports) Regulations 2005 (SI2005/572). They are also responsible for safeguarding the assets of the Society and hence for taking reasonable steps to ensure the prevention and detection of fraud and other irregularities.

## Investment policy and returns

The Society investments were professionally managed by Rensburg Sheppards during the year and the Trustees have decided they wish investments to be subjected to moderate risk within a balanced portfolio. The Trustees have agreed an ethical investment policy and this was reviewed with Rensburg during their yearly investment meeting.

The year has seen improved returns and the market valuation as at 31 December 2009 is as per the accounts.

## Society reserves

The Trustees have reviewed the reserves of the Society in line with guidance from the Charity Commission. They have included Unrestricted Funds, Restricted Funds and the Designated Funds and have agreed the following.

*Unrestricted funds.* In view of the Society's economic situation the Trustees feel that they need to take a prudent view of the future in order to be able to maintain the viability of the organisation. They have decided that a level of reserves equivalent to nine months' income is appropriate for an organisation of this size and complexity.

*Restricted funds.* The Society has a number of restricted funds at its disposal, and the Trustees are actively pursuing ways in which these funds can be used in accordance with their restriction.

*Designated funds.* These funds represent amounts set aside for improvements to the infrastructure of the organisation, particularly in respect of IT and property improvement. These improvements will allow for continued growth and allow the Society to continue to serve the needs of the membership in the future. A number of projects are already underway.

## Public benefit

The Trustees have considered this matter, in conjunction with the guidance contained in the Charity Commission's general guidance on public benefit, and have concluded:

- That the aims of the organisation continue to be charitable;
- That the aims and work done give identifiable benefits to the charitable sector and that members of the public are aware of the high standards and education that members achieve;
- That the benefits are for the public, are not unreasonably restricted in any way and certainly not by ability to pay;
- That there is no detriment or harm arising from the aims or activities;
- That the public are made aware of developments in the profession and the science that affect their daily lives;
- That membership fees are modest and that there is a grade of membership that is open to the public who share an interest in the profession; and;
- That the courses and the website are available to all and not just members.

## Risk assessment

The Trustees are aware of their responsibilities in terms of risk assessment. A small committee of Trustees meets twice a year to discuss the subject; it includes representatives from the Trustee body and the Finance Director. Topics reviewed in the year include Disaster Recovery procedures as well as review of the accounts Internal Controls documentation.

### Achievements and performance

It has been another busy year for the Society with achievements and performance needing to be clearly measured, in defined areas, relating to the objectives of the organisation.

*1. Outsourced services.* Following a review by the Senior Management Team, it was decided in August to outsource Society subscriptions processing to APT Solutions Ltd based in Telford. This has resulted in an improved service for members and currently over 300 telephone calls per week are being dealt with by the outsourced agency. The two staff affected in the Leicester office were subsequently redeployed within the organisation.

*2. Member conduct rules.* From 1 July 2009 new Member Conduct rules were introduced in the light of the Society's post Statutory Regulation role as a Learned Society.

*3. Membership benefits.* In the 2010 subscriptions renewal pack, members were advised of a new package of member benefits. These provide a range of discounts and offers on high street brands. This has proved popular with members.

*4. BPS Learning Centre and Shop.* During the year the Society has been working to develop a one-stop shop for professional development. In April the new BPS Learning Centre was launched which now provides members with all their professional development needs. Members can browse the online catalogue and pay for their development online. New e-learning modules have been developed and this has enhanced the myCPD facilities.

*5. Research Digest and The Psychologist.* The Research Digest continued to rise in the influential Wikio rankings of worldwide science blogs, reaching the top 10 in December and is the highest ranked in psychology. It is now the top psychology blog in the world and continues to develop in bringing peer reviewed psychological science to a wide audience via the web, e-mail, Facebook and Twitter. During the year *The Psychologist* has experimented with mounting 'tasters' and occasional full copies on an external publishing platform (see [www.issuu.com/thepsychologist](http://www.issuu.com/thepsychologist)). This resulted in over 214,000 hits for the October issue alone, making it by far the most widely read Society publication

*6. The Science Museum.* The new collaboration between the Society and the Science Museum bore fruit during the year when Phil Loring took up his post as BPS Curator of Psychology at the Museum. Psychology now has a champion within an organisation that reaches out to nearly three million visitors a year.

*7. Membership and qualifications.* At 31 December 2009 the total membership of the Society was 49,021 and this includes 6,751 students. This compares with 48,230 at the same period the year before of which students amounted to 7,118. Psychology continues to be a popular subject both at A-level and at university and this is reflected in these membership figures.

*8. Conferences.* In 2009 the BPS Conferences team organised 71 events and 4869 delegates attended them. The team took over the bookings for the newly formed BPS Learning Centre and has also had a big input into the launch of the BPS Shop. It is anticipated that the number of events in 2010 will increase and we hope to see growth in the numbers attending.

## Employee involvement and employment

Employees have been consulted on issues of concern to them through the Joint Negotiating Committee of the union Unite and the Staff Consultation and Consultative Committee, and have been kept informed on specific matters directly by senior management.

## Auditors

On 29 December 2009 the Society auditor Tenon Audit Limited changed its name to RSM Tenon Audit Limited and consequently RSM Tenon Audit Limited is disclosed as the statutory auditor. Their help and advice is appreciated by all the trustees.

## Dr R.D.R. Mallows

Honorary Treasurer, 26 March 2010

### INDEPENDENT AUDITOR'S STATEMENT TO THE TRUSTEES

We have examined the summarised financial statements which comprise the Consolidated Statement of Financial Activities and the Consolidated Balance Sheet. This report is made solely to the Trustees of The British Psychological Society as a body, in accordance with *Accounting and Reporting by Charities: Statement of Recommended Practice (SORP 2005)*. Our audit work has been undertaken so that we might state to the Trustees those matters we are required to state to them in an auditor's report and for no other purpose. To the fullest extent permitted by law, we do not accept or assume responsibility to anyone other than The British Psychological Society and the Trustees as a body for our audit work, for this report, or for the opinions we have formed.

**Respective responsibilities of the Trustees and auditors:** The Trustees are responsible for preparing the summary financial statements in accordance with the recommendations of *Accounting and Reporting by Charities: Statement of Recommended Practice*.

Our responsibility is to report to you our opinion on the consistency of the summary financial statements with the full financial statements and Trustees' annual report. We also read the other information contained in the summary annual report and consider the implications for our report if we become aware of any apparent misstatements or material inconsistencies with the summary financial statements.

**Basis of opinion:** We conducted our work having regard to Bulletin 1999/6, The Auditors' Statement on the Summary Financial Statement, and Practice Note 11, The Audit of Charities, issued by the Auditing Practices Board for use in the United Kingdom.

**Opinion:** In our opinion, the summarised financial statements are consistent with the full financial statements and the Trustees' annual report of The British Psychological Society for the year ended 31 December 2009.

**RSM Tenon Audit Ltd**  
Registered Auditor, Leicester

# FINANCIAL REPORT & SUMMARY ACCOUNTS FOR THE YEAR *continued*

## ABRIDGED FINANCIAL INFORMATION

Consolidated Statement of Financial Activities for year ended 31 December 2009

	2009 General Funds £'000	2009 Designated Funds £'000	2009 Restricted Funds £'000	2009 Total £'000	2008 Total £'000
<b>Incoming resources</b>					
<b>Activities in furtherance of the charity's objectives</b>					
Subscriptions	5,104	-	-	5,104	5,012
Registers and directories	556	-	-	556	898
Conferences and events	1,267	-	-	1,267	1,123
Journals and book publishing	1,262	-	-	1,262	1,061
Other income and grants	1,312	-	-	1,312	1,305
<b>Activities for generating funds</b>					
Trading income	858	-	-	858	952
Investment income	206	-	-	206	182
<b>Total incoming resources</b>	<b>10,565</b>	<b>-</b>	<b>-</b>	<b>10,565</b>	<b>10,533</b>
<b>Resources expended</b>					
<b>Costs of activities in furtherance of the charity's objectives</b>					
Advancement of psychology	1,414	-	73	1,487	1,474
Application of psychology	1,931	-	-	1,931	2,000
Conferences and events	881	-	-	881	976
Cooperation with other organisations	206	-	-	206	245
Diffusion of knowledge	1,625	-	-	1,625	1,855
Examinations and training	1,002	-	-	1,002	1,137
Membership and conduct	1,804	-	-	1,804	2,165
Science and policy	618	-	-	618	740
Governance	94	-	-	94	128
<b>Costs of generating funds</b>					
Trading costs	507	-	-	507	472
Investment management fees	24	-	-	24	24
<b>Total resources expended</b>	<b>10,106</b>	<b>-</b>	<b>73</b>	<b>10,179</b>	<b>11,216</b>
<b>Net incoming / (outgoing) resources before transfers</b>	<b>459</b>	<b>-</b>	<b>(73)</b>	<b>386</b>	<b>(683)</b>
Transfers between funds	(310)	310	-	-	-
<b>Net incoming / (outgoing) resources after transfers</b>	<b>149</b>	<b>310</b>	<b>(73)</b>	<b>386</b>	<b>(683)</b>
Gains / (losses) on investments	710	-	-	710	(942)
<b>Net movement in funds</b>	<b>859</b>	<b>310</b>	<b>(73)</b>	<b>1,096</b>	<b>(1,625)</b>
Funds brought forward as at 1 January 2009	6,903	500	198	7,601	9,226
<b>Funds carried forward as at 31 December 2009</b>	<b>7,762</b>	<b>810</b>	<b>125</b>	<b>8,697</b>	<b>7,601</b>

# FINANCIAL REPORT & SUMMARY ACCOUNTS FOR THE YEAR *continued*

## CONSOLIDATED BALANCE SHEET AT 31 DECEMBER 2009

	2009	2008
	£'000	£'000
<b>Fixed assets</b>		
Tangible assets	4,664	4,875
Investments	4,954	3,632
	<hr/> 9,618	<hr/> 8,507
<b>Current assets</b>		
Debtors	526	824
Cash at bank and in hand	848	614
	<hr/> 1,374	<hr/> 1,438
<b>Creditors: Amounts falling due within one year</b>	(2,295)	(2,344)
<b>Net current liabilities</b>	<hr/> (921)	<hr/> (906)
<b>Net assets</b>	<hr/> 8,697	<hr/> 7,601
Represented by:		
<b>Income funds</b>		
General funds	7,762	6,903
Designated funds	810	500
	<hr/> 8,572	<hr/> 7,403
Unrestricted funds	8,572	7,403
Restricted funds	125	198
<b>Total funds</b>	<hr/> 8,697	<hr/> 7,601

The summary financial information is not the statutory accounts but it has been extracted from the Society's audited financial statements for the year ended 31 December 2009 on which an unqualified audit opinion was given. The financial statements were approved by the Board of Trustees on 26 March 2010 and have been sent to the Charity Commissioners. These summarised financial statements may not contain sufficient information to allow for a full understanding of the financial affairs of The British Psychological Society. Copies of the full financial statements may be obtained from the Society's Leicester office, St Andrews House, 48 Princess Road East, Leicester LE1 7DR.

***Professor P.F. Maras***  
Honorary General Secretary

***Dr R.D.R. Mallows***  
Honorary Treasurer

# BOARD OF TRUSTEES & OFFICERS OF THE SOCIETY

---

## Board of Trustees

President and Chair	Ms Sue Gardner
President Elect	Dr Gerry Mulhern
Vice President	Dr Liz Campbell
Honorary General Secretary	Professor Pam Maras
Honorary Treasurer	Dr Richard Mallows
Chair, Professional Practice Board	Dr Carole Allan
Chair, Membership & Professional Training Board	Dr Peter Banister
Chair, Research Board	Professor Judi Ellis
Chair, Publications & Communications Board	Dr Graham Powell
Chair, Psychology Education Board	Dr Richard Latto
Chair, Professional Conduct Board (to 1 July 2009)	Mr Joop Tanis

## *Representative Council Appointments*

Chair, Representative Council (Observer)*	Dr Gerry Mulhern / Professor Maurice Stringer
Representative Council Cooptees	Dr Richard Mallows Professor Graham Turpin Professor Jill Wilkinson Emeritus Professor Ken Brown

## Chairs of Committees

Ethics Committee	Mr Richard Kwiatkowski
Investigatory Committee	Dr Bertie Ellis
Joint Committee for Psychology in Higher Education	Professor William Marlsen-Wilson
Standing Committee for the Promotion of Equal Opportunities ( <i>now disbanded</i> )	Dr Sue Warner

## Chairs of Other Committees

### *Membership & Professional Training Board*

Board of Examiners in Clinical Psychology	Mr David Murphy
Board of Examiners in Clinical Neuropsychology	Dr Jody Warner-Rogers
Board of Examiners in Educational Psychology	Vacant
Board of Examiners in Forensic Psychology	Dr Julie Harrower
Board of Examiners in Health Psychology	Dr Mark Forshaw
Board of Examiners in Occupational Psychology	Mr Rod Graves / Mr David Carew
Board of Examiners Diploma in Counselling Psychology	Professor Pam James
Board of Assessors Sport & Exercise Psychology	Mr Ian Maynard
Committee on Training in Clinical Psychology	Mr Andrew Cuthbertson
Committee for Training in Clinical Neuropsychology	Professor Gus Baker
Training Committee in Counselling Psychology	Mr Allan Winthrop
Division of Educational & Child Psychology	
Training Committee	Mr Trevor Holme
Division of Forensic Psychology Training Committee	Dr Emma Palmer
Division of Health Psychology Training Committee	Mr Neil Coulson
Division of Occupational Psychology Training Committee	Dr George Delafield

\* Where there was a change during the year, both members are listed

## BOARD OF TRUSTEES & OFFICERS OF THE SOCIETY *continued*

---

Division of Sport & Exercise Psychology Training Committee	Mr Martin Eubank
Scottish Division of Educational Psychology Training Committee	Ms Susie Turner
Fellowships Committee	Dr Christopher Williams
Admissions Committee	Dr Sarah Brown
Standing Committee for Continuing Professional Development	Dr Joanne Thatcher
National Occupational Standards in Psychology Steering Committee	Vacant
Registration Committee for Psychologists Specialising in Psychotherapy	Professor David Lane
<i>Professional Practice Board</i>	
Steering Committee on Test Standards	Dr Pat Lindley
Standing Committee on Psychology in Health & Social Care	Professor Peter Kinderman
Workforce Planning Advisors Standing Committee	Dr Pat Stirling
Expert Witness Advisory Group	Professor Jane Ireland
<i>Psychology Education Board</i>	
Board of Examiners for the Qualifying Examination	Dr Peter Wright
Graduate Qualifications Accreditation Committee	Dr Ruth Green
Standing Committee on Psychology Education for Other Groups	Ms Viv Brunsden
Standing Committee on Pre-tertiary Education	Mr Philip Banyard
Student Members Group	Mr Justin Walker / Ms Annabel Harris
Award for the Excellence in Teaching of Psychology	Dr Richard Latta
<i>Publications and Communications Board</i>	
Media & Press Committee and Honorary Press Officer	Dr Fiona Jones
<i>The Psychologist</i> Policy Committee	Dr Paul Redford
Journals Committee	Professor Stephen Morley
Standing Conference Committee	Emeritus Professor Ken Brown
<i>Research Board</i>	
Standing Advisory Committee on the Welfare of Animals in Psychology ( <i>now disbanded</i> )	Professor Peter Clifton

# BOARD OF TRUSTEES & OFFICERS OF THE SOCIETY *continued*

---

## Chairs of Divisions, Sections, Branches and Special Groups

Division of Clinical Psychology	Dr Jenny Taylor
Division of Counselling Psychology	Dr Malcolm Cross / Dr Barbara Douglas
Division of Educational & Child Psychology	Ms Joy Wellan
Scottish Division of Educational Psychology	Ms Jean Campbell
Division of Forensic Psychology	Dr Carol Ireland
Division of Health Psychology	Professor Stanton Newman / Dr Diana Harcourt
Division of Neuropsychology	Professor Huw Williams
Division of Occupational Psychology	Mr David Carew
Division of Sport & Exercise Psychology	Dr Joanne Thatcher
Division for Teachers & Researcher in Psychology	Dr Jacqueline Taylor
Cognitive Psychology Section	Dr Catriona Morrison
Consciousness & Experiential Psychology Section	Dr Guy Saunders / Dr Susan Stuart
Developmental Psychology Section	Mr Gavin Bremner
History & Philosophy of Psychology Section	Dr Geoff Bunn
Psychology of Sexualities	Miss Joanne Semlyen
Mathematical, Statistical & Computing Section	Professor David Clark-Carter
Psychobiology Section	Mr Philip Murphy
Psychology of Education Section	Dr Elizabeth Rogers / Dr Karl Wall
Psychology of Women Section	Professor Erica Burman
Psychotherapy Section	Ms Angela Douglas
Qualitative Methods in Psychology Section	Dr Anna Madill
Social Psychology Section	Ms Evanthia Lyons
Transpersonal Psychology Section	Dr Malcolm Walley / Ms Ingrid Slack
North East of England Branch	Dr Simon Whitaker
Northern Ireland Branch	Professor Maurice Stringer
North West of England Branch	Ms Usharani Rout / Ms Tina Thomas
Scottish Branch	Ms Elizabeth Baikie
South West Branch	Mr Christopher Kent
Welsh Branch	Mr Nick Perham
Wessex Branch	Dr Kathryn Fielden
West Midlands Branch	Ms Helena Taylor-Knox / Miss Catherine Steele
Special Group in Coaching Psychology	Ms Vicky Ellam-Dyson / Dr Ho Law
Special Group for Psychologists & Social Services	Mr John Newland

## Honorary Appointments

Chair of Trustees, BPS Welfare Fund	Dr Janet Carr
-------------------------------------	---------------

# MEMBERS OF THE REPRESENTATIVE COUNCIL

---

## Honorary Officers

President	Ms Sue Gardner
President-Elect	Dr Gerry Mulhern
Vice President	Dr Liz Campbell
Honorary General Secretary	Professor Pam Maras
Honorary Treasurer	Dr Richard Mallows
Chair, The Representative Council*	Dr Gerry Mulhern / Professor Maurice Stringer
Vice Chair, The Representative Council	Dr Gerry Mulhern

### *Elected Members to retire 2010*

Mr Jim Good  
Dr Carole Allan  
Dr Karl Wall  
Dr Christina Lioffi

### *Elected Members to retire 2011*

Dr Graham Powell  
Ms Pauline Willis

### *Elected Members to retire 2012*

Professor Malcolm Adams  
Dr George Delafield  
Dr Gene Johnson  
Professor Jill Wilkinson

## Council Members\*

Dr Carole Allan	Dr Catriona Morrison
Ms Elizabeth Baikie	Dr Philip Murphy
Dr Judi Bamford	Dr John Newland
Dr Peter Banister	Professor Stan Newman /
Mr Mike Berry	Dr Diana Harcourt
Professor Gavin Bremner	Dr Nick Perham
Emeritus Professor Ken Brown	Dr Remco Polman / Dr Jo Thatcher
Dr Geoff Bunn	Dr Graham Powell
Mr Francis Butler	Dr Paul Redford
Dr Rose Capdevila Sola	Ms Christina Richards
Mr David Carew	Dr Lynne Rogers
Professor David Clark-Carter	Mr Chris Scott / Ms Jean Campbell
Dr Malcolm Cross / Dr Barbara Douglas	Ms Emma Shackle
Professor Judi Ellis	Dr Jacqueline Taylor
Mr Alan Gilbert	Dr Jenny Taylor
Mrs Jane Griffin / Mr Chris Kent	Ms Helena Taylor-Knox /
Dr Philippa Griffiths	Dr Catherine Steele
Dr Carol Ireland	Professor Graham Turpin
Mr Richard Kwiatkowski	Mr Justin Walker / Miss Annabel Harris
Dr Richard Latto	Dr Malcolm Walley / Ms Ingrid Slack
Dr Ho Law	Dr Simon Whitaker
Professor Evanthia Lyons	Professor Jill Wilkinson
Dr Anna Madill	

\* Where there was a change during the year all members are listed.

## APPENDIX II: MEMBERSHIP FIGURES

### Register of Chartered Psychologists

At 31 December	Full	EPC <sup>†</sup>	Total	CONDITIONAL LIST
1989	4692	942	5634	158
1990	5117	1090	6207	270
1991	5390	1164	6554	370
1992	5689	1216	6905	404
1993	6143	1214	7357	436
1994	6564	1167	7731	377
1995	6963	1099	8062	327
1996	7333	1121	8454	345
1997	7643	1126	8769	321
1998	7890	1116	9006	306
1999	8277	1065	9342	296
2000	8689	1060	9749	284
2001	9072	1102	10,174	288
2002	9469	1142	10,611	350
2003	10,005	1250	11,295	496
2004	10,711	1,350	12,061	687
2005	11,376	1,566	12,942	792
2006	12,020	1,870	13,890	1,048
2007	12,778	2,032	14,810	1,268
2008	14,836	2,105	16,941	1,491
2009	16,228	2,031	18,259	+

† Full, with Exemption from Practising Certificate; + The Conditional List became defunct on 1 July 2009, when statutory regulation through the HPC came into effect and the Society's Register of Chartered Psychologists was superseded by the HPC's register of Practitioner Psychologists.

### Division membership

At 31 December	DECP	SDEP	DCP	DOP	DFPS	DCoP	DTRP	DHP	DoN	DSEP
1965	383	94								
1970	384	78	362							
1975	485	80	629	144						
1977	482	84	750	173	105					
1980	539	93	966	241	133					
1982	623	105	1242	267	166	225†				
1983	662	101	1341	294	167	237†				
1985	724	104	1574	317	199	439†	120+			
1986	756	98	1674	348	204	595†	204+	111‡		
1988	839	117	1917	452	223	958†	270+	316‡		291++
1989	911	127	2150	518	232	1167†	304+	408‡		354++
1990	972	131	2317	533	242	1221†	332+	559‡		458++
1991	1011	133	2393	568	258	1222†	346+	669‡	115•	505++
1992	1042	136	2490	632	288	1208†	375+	743‡	125•	504++
1993	1063	136	2680	661	312	1177†	411+	783‡	155•	552++
1994	1095	140	2810	745	360	1164	425+	774‡	199•	589++
1995	1102	140	2988	956	411	1154	404+	783‡	221•	587++
1996	1137	141	3184	1056	462	1193	417+	820‡	272•	599++
1997	1153	141	3474	1145	494	1226	421+	858‡	327•	548++
1998	1173	141	3731	1244	553	1260	305	849	399•	506++
1999	1206	147	3938	1353	599	1237†	326	868	436	349++
2000	1226	163	4210	1522	769	1280†	348	912	528	355++
2001	1265	175	4514	1635*	920	1356†	353	951	577	332++
2002	1257	176	4777	3092	1008	1353+	351	1015	628	322++
2003	1295	184	5124	3182	1271	1464+	367	1061	695	339++
2004	1336	198	5439	3200	1414	1581	373	1108	807	426
2005	1342	246	5884	3259	1604	1738	383	1156	809	592
2006	1425	273	6381	3390	1807	1947	407	1250	812	570
2007	1568	295	6863	3598	1896	2197	431	1363	830	556
2008	1941	364	8307	3812	1996	2560	510	1473	890	567
2009	2218	489	9783	3917	2088	2792	594	1567	951	584

† The Counselling Psychology Section merged with the Special Group formed in 1989. The Special Group in Counselling Psychology became the Division in 1994; + The Special Group for the Teaching of Psychology became the Division for Teachers and Researchers in Psychology in 1998; ‡ The Health Psychology Section was redesignated as the Special Group in 1992. It became the Division of Health Psychology in 1998; • The Special Group in Clinical Neuropsychology became the Division of Neuropsychology in 1999; §The Division of Criminological & Legal Psychology was renamed the Division of Forensic Psychology in 1999; \* Members of the Occupational Psychology Section transferred to the Division of Occupational Psychology at the end of 2001; ++ The Sport and Exercise Psychology Section became the Division for Sport and Exercise Psychology in 2004.

### Special Group membership

At 31 Dec.	Central Government	Social Services	Coaching Psychology
1995	97	175	++
1997	77	192	++
1998	†	184	++
2000	†	194	++
2001	†	188	++
2002	†	157	++
2003	†	154	++
2004	†	137	1571
2005	†	131	1977
2006	†	119	2069
2007	†	115	2204
2008	†	110	2359
2009	†	110	2298

† The Special Group for Psychologists in Central Government was disbanded in 1998. ++ The Special Group in Coaching Psychology was formed in 2004.

# MEMBERSHIP FIGURES *continued*

## Branches

At 31 December	London & Home Counties	North West of England	Northern Ireland	Scottish	Welsh	Wessex	West Midlands	South West of England	North East of England
1989	+	1265	438	1131	542	1086			
1991	+	1481	523	1288	619	1311			
1995	+	2074	703	1688	859	2445	2128		
1997	+	2537	895	2015	1004	3152	2618		
1998	+	2558	909	2055	1039	3320	2770	1487	
1999	+	2653	998	2176	1102	3535	2933	1569	
2000	+	2693	1061	2274	1150	3656	3038	1628	
2001	+	2823	1184	2429	1267	3820	3213	1791	
2002	+	3000	1330	2561	1326	3944	3380	1966	
2003	+	3307	1468	2802	1460	4300	3797	2106	3759
2004	+	3586	1564	3014	1548	4568	4024	2223	3998
2005	+	3705	1590	3120	1595	4705	4201	2255	4177
2006	9963	3838	1696	3249	1637	4941	4314	2327	4428
2007	10188	3904	1822	3402	1585	5018	4429	2341	4525
2008	11757	4041	1951	3488	1555	5139	4606	2426	4565
2009	12096	4043	1974	3572	1581	5210	4585	2476	4589

The figures shown in this appendix represent the position at the end of the year. Differences between these and any figures reported by Sections, Divisions, Special Groups and Branches are due to timing variations.

+ The London & Home Counties Branch was formed in 2006.

## Section membership

### At 31 December

1941	272	280	117	125															
1950	433	657	254	253															
1960	458	533	281	308															
1970	388	718	483	497	310														
1975	366	776	530	486	270	565													
1976	349	732	555	525	268	559													
1979	291	595	538	510	197	500	225												
1980	234	573	548	527	210	504	225												
1981	286	569	569	513	218	501	225												
1982	281	554	570	492	222	507	219												
1983	273	545	598	484	208	504	217	72	92										
1984	265	525	635	497	203	492	227	68	126										
1985	251	506	653	504	216	540	276	84	124										
1986	246	494	825	558	210	580	347	112	144										
1988	474	628	1554	765	197	677	528	196	201	291									
1989	564	692	1843	795	190	721	563	204	218	354									
1990	655	702	2134	864	194	728	616	264	237	458									
1991	648	761	2181	867	200	733	642	263	243	505									
1992	652	752	2187	876	206	772	658	266	237	504									
1993	648	764	2252	894	210	787	683	269	240	552	210								
1994	654	768	2302	949	208	827	714	282	248	589	249								
1995	666	791	2299	938	215	823	719	292	246	587	302								
1996	665	798	2427	915	206	848	714	275	223	599	341	231							
1997	661	828	2398	836	198	814	705	277	225	548	343	278	269						
1998	652	802	2405	771	190	798	671	279	225	506	336	338	307						
1999	637	796	2417	761	192	776	652	260	223	466	349	362	325	299					
2000	631	757	2357	705	179	750	634	253	210	496	355	383	339	313					
2001	620	724	2284	675	178	725	601	237	208	523	332	366	330	300					
2002	578	646	*	601	161	678	535	208	206	427	322	337	297	272					
2003	590	609	*	579	158	650	525	206	202	402	339	344	277	273					
2004	576	583	*	541	155	625	515	193	194	368	†	353	282	260					
2005	573	531	*	495	147	591	487	175	190	337	†	366	275	263	1575				
2006	548	515	*	468	142	558	463	164	183	302	†	363	257	256	1398				
2007	517	482	*	438	137	516	438	149	180	294	†	360	242	245	1232				
2008	502	453	*	417	144	493	441	136	173	284	†	353	220	228	1139				
2009	485	432	*	402	138	473	438	137	160	270	†	338	198	221	1048				

Psychotherapy	Education	Occupational	Social	Maths, Stats & Computing	Developmental	Cognitive	Psychobiology	History & Philosophy	Psychology of Women	Sport & Exercise	Transpersonal	Consciousness & Experiential	• Sexualities	Qualitative Methods in Psychology
---------------	-----------	--------------	--------	--------------------------	---------------	-----------	---------------	----------------------	---------------------	------------------	---------------	------------------------------	---------------	-----------------------------------

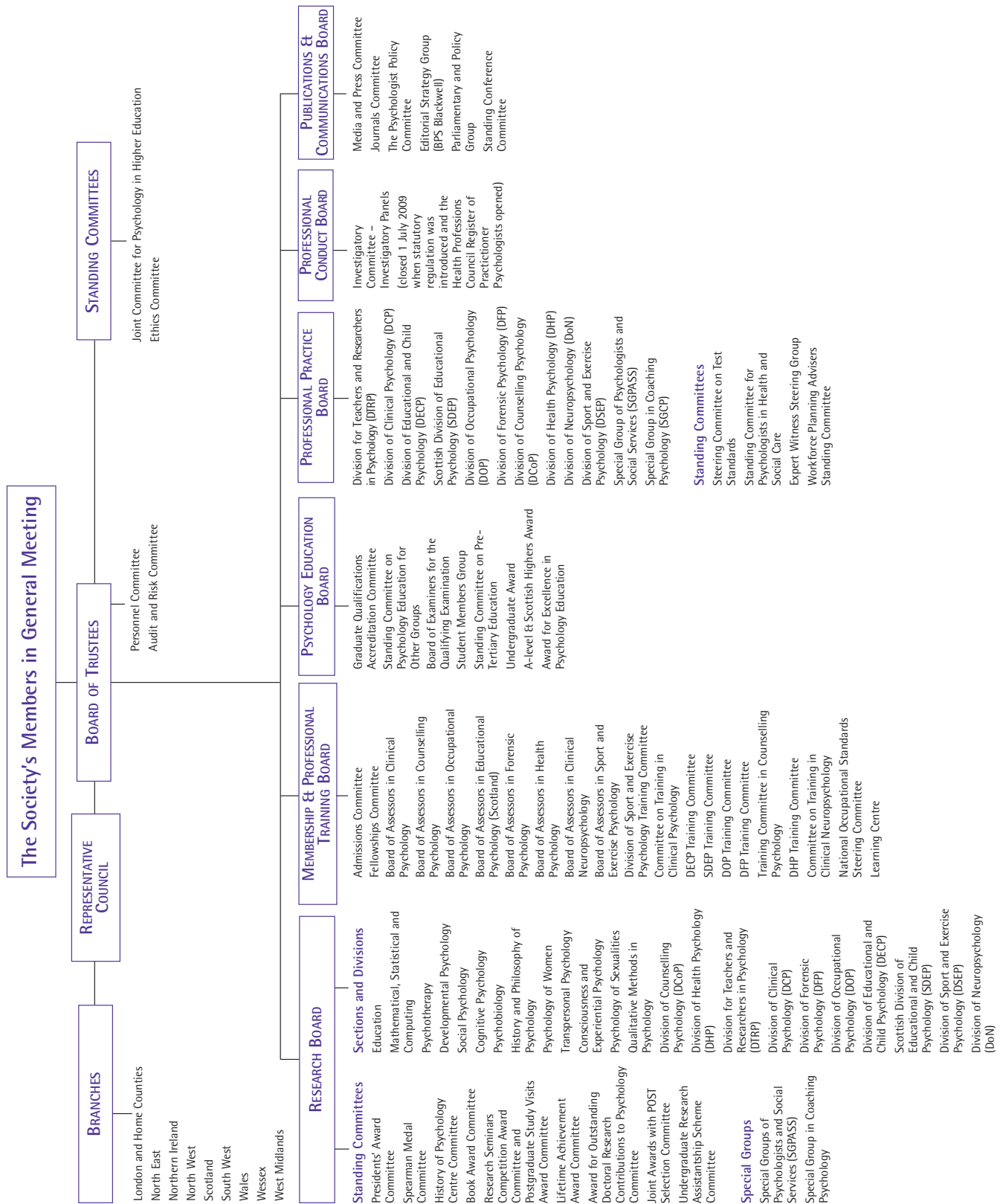
† The Sport and Exercise Psychology Section became the Division of Sport and Exercise Psychology in 2004. \* Members of the Occupational Psychology Section transferred to the Division of Occupational Psychology at the end of 2001. • The Lesbian & Gay Psychology Section was renamed the Psychology of Sexualities Section in 2009.

## MEMBERSHIP FIGURES *continued*

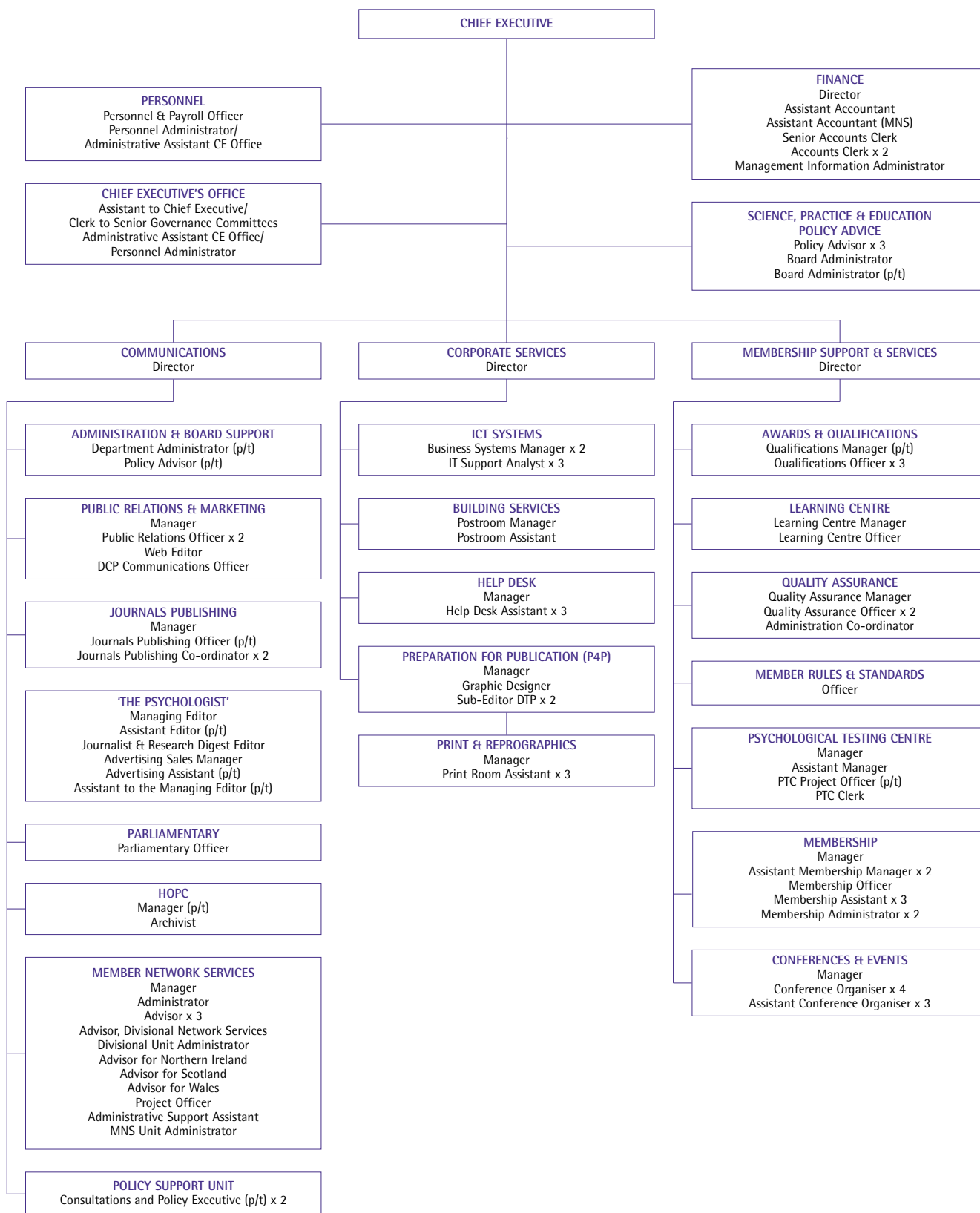
### Overall membership

<i>At 31 Dec.</i>	<i>Hon. Fellows</i>	<i>Hon. Life Members</i>	<i>Associate Fellows</i>	<i>Graduate Members</i>	<i>Ordinary Members</i>	<b>Total Members</b>	<i>Foreign Affiliates</i>	<i>Affiliates</i>	<i>Student Subscribers</i>	<b>Total List</b>
1941						<b>811</b>				
1945	14		235	225	590	<b>1064</b>				
1950	15		258	335	1289	<b>1897</b>				
1960	23		311	875	248	<b>2655</b>		43	353	
1970	24		361	1381	1654	<b>3811</b>	55	96	1097	<b>5059</b>
1975	20		385	1932	3212	<b>5848</b>	97	122	885	<b>6952</b>
1979	22		414	1959	4519	<b>7130</b>	70	139	1108	<b>8447</b>
1980	21		443	2004	4982	<b>7655</b>	63	147	1353	<b>9218</b>
1981	22		442	2106	5519	<b>8284</b>	60	150	1340	<b>9834</b>
1982	21		464	2184	5866	<b>8721</b>	82	156	1461	<b>10,420</b>
1983	21		485	2260	6424	<b>9368</b>	99	171	1200	<b>10,838</b>
1984	20		493	2326	6716	<b>9727</b>	113	183	1463	<b>11,486</b>
1985	19		506	2407	7003	<b>10,089</b>	116	195	1443	<b>11,843</b>
1986	19		517	2494	7377	<b>10,555</b>	120	215	1470	<b>12,360</b>
1988	18		556	2930	8032	<b>11,669</b>	140	216	1220	<b>13,245</b>
1989	19		625	3642	8616	<b>13,031</b>	139	223	1439	<b>14,832</b>
1990	19		640	3873	9448	<b>14,105</b>	141	241	1527	<b>16,014</b>
1991	19	2	659	3948	10,291	<b>15,039</b>	142	257	1738	<b>17,176</b>
1992	18	4	661	4044	11,096	<b>15,938</b>	148	278	2086	<b>18,450</b>
1993	19	5	663	4145	12,231	<b>17,173</b>	144	309	2514	<b>20,140</b>
1994	21	6	663	4196	13,459	<b>18,448</b>	141	335	3518	<b>22,442</b>
1995	22	7	657	4261	14,396	<b>19,443</b>	130	365	4666	<b>24,604</b>
1996	22	9	665	4323	16,124	<b>21,239</b>	126	420	5823	<b>27,608</b>
1997	25	9	666	4325	17,488	<b>22,605</b>	115	463	6477	<b>29,660</b>
1998	25	8	676	4363	18,941	<b>24,102</b>	107	504	6351	<b>31,064</b>
1999	25	8	696	4364	20,329	<b>25,503</b>	114	500	7421	<b>33,538</b>
2000	23	9	665	4408	21,626	<b>26,809</b>	109	508	6763	<b>34,189</b>
2001	22	9	663	4422	23,272	<b>28,460</b>	101	525	5607	<b>34,693</b>
2002	20	9	662	4426	24,986	<b>30,174</b>	98	517	5688	<b>36,477</b>
2003	20	7	664	4453	27,215	<b>32,427</b>	90	530	6931	<b>39,979</b>
2004	21	8	650	4491	29,144	<b>34,375</b>	88	546	7485	<b>42,494</b>
2005	19	7	628	4496	30,593	<b>35,800</b>	79	548	7337	<b>43,764</b>
2006	22	8	621	4527	32,372	<b>37,601</b>	76	606	7268	<b>45,551</b>
2007	25	8	612	4590	33,775	<b>39,061</b>	74	650	6890	<b>46,675</b>
2008	25	8	602	4656	35,056	<b>40,395</b>	97	620	7,118	<b>48,230</b>
2009	26	8	614	4693	36,166	<b>41,551</b>	114	605	6,751	<b>49,021</b>

# SOCIETY STRUCTURE



# OFFICE MANAGEMENT STRUCTURE



# THE BRITISH PSYCHOLOGICAL SOCIETY

---

## SENIOR MANAGEMENT TEAM

Chief Executive	Professor Ann Colley
Director of Communications	Stephen White
Director of Finance	Russell Hobbs
Director of Corporate Services	Mike Laffan
Director of Membership Services & Support	Simon Bowen

**Registered Office**  
St Andrews House  
48 Princess Road East  
Leicester LE1 7DR

**London Office**  
30 Tabernacle Street  
London EC2A 4UE

**Solicitors**  
Freeth Cartwright LLP  
1 Colton Square  
Leicester LE1 1QH

**Independent Auditors**  
RSM Tenon Audit Ltd  
Registered Auditor  
1 Bede Island Road  
Bede Island Business Park  
Leicester LE2 7EA

**Bankers**  
Royal Bank of Scotland plc  
5 Market Street  
Leicester LE1 6DN

**Pension Advisors**  
BBT Financial Services  
Independent Financial Advisors  
Wrens Court  
62 Victoria Road  
Sutton Coldfield  
West Midlands B72 1SY

**Registered Charity No.** 229642  
**Scottish Registered Charity No.** SC039452



The  
British  
Psychological  
Society

St Andrews House, 48 Princess Road East, Leicester LE1 7DR, UK  
Tel: 0116 254 9568; Fax: 0116 247 0787; E-mail: [mail@bps.org.uk](mailto:mail@bps.org.uk)  
Website [www.bps.org.uk](http://www.bps.org.uk)

Incorporated by Royal Charter Registered Charity No 229642